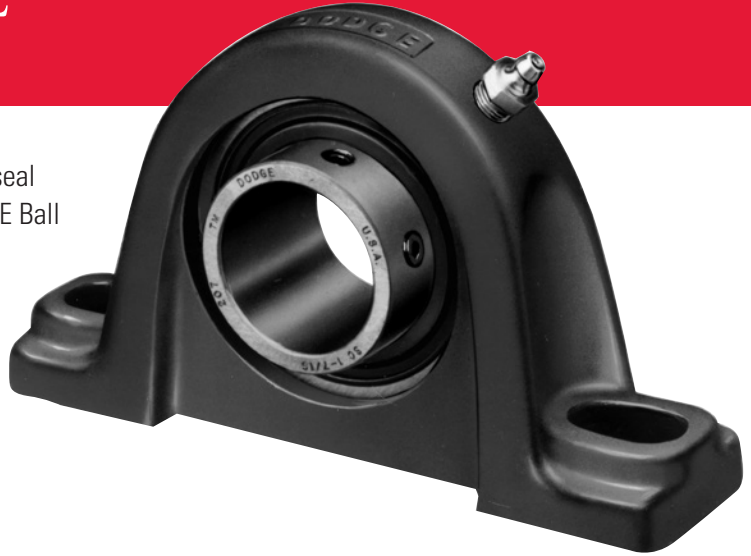


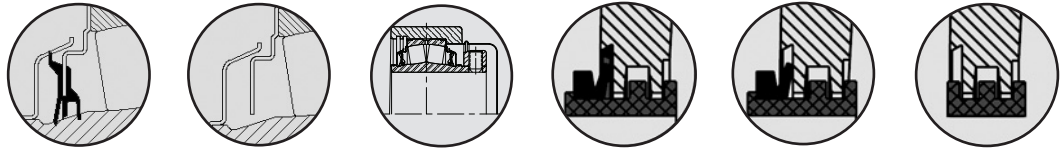
BEARING SEAL SELECTION GUIDE

BEARINGS

The DODGE Bearing Seal Selection Guide provides seal selection for specific operating conditions for DODGE Ball and Roller Bearing product offerings.



SPHERICAL ROLLER BEARINGS



ENVIRONMENT APPLICATION	TRIDENT TRIPLE LIP CONTACT SEAL	LABRITH HIGH SPEED S-2000 IMPERIAL ISAF	END COVER S-2000 Imperial	DROP-IN TRIPLE-TECT SEAL USAF/USN	TRIPLE-TECT LABRITH & FACE RUBBING SEAL USAF/USN, SAF-XT	SPLIT LER LABRITH SEAL NON-METALLIC SPLIT-SPHER USAF/USN
Dusty/Dirty	++	+	++	++	++	▲
Wet/Moisture Laden	++	○	++	++	++	○
High Pressure Washdown	+	○	++	▲	▲	○
¹ High Temperature	○	+	+	○	○	○
² High Speed	○	++	NS	▲	▲	▲
Chemical	▲	▲	+	▲	▲	○
Misalignment	+	+	NS	+	+	+



ENVIRONMENT APPLICATION	METAL LER LABRITH SEAL USAF/USN, SAF-XT	END COVER USAF/USN, SAF-XT	AUXILIARY TACONITE SEAL USAF/USN, SAF-XT	SINGLE LIP SEAL UNI-II	CAST CLOSED END USAF/USN
Dusty/Dirty	▲	++	++	+	++
Wet/Moisture Laden	○	++	++	+	++
High Pressure Washdown	○	++	++	▲	++
¹ High Temperature	+	▲	○	○	++
² High Speed	+	NS	○	+	NS
Chemical	○	▲	▲	▲	++
Misalignment	+	NS	▲	NS	NS

++ VERY GOOD

+ GOOD

▲ QUESTIONABLE (DEPENDS ON CONDITION; CONSULT DODGE ENGINEERING)

○ NOT RECOMMENDED

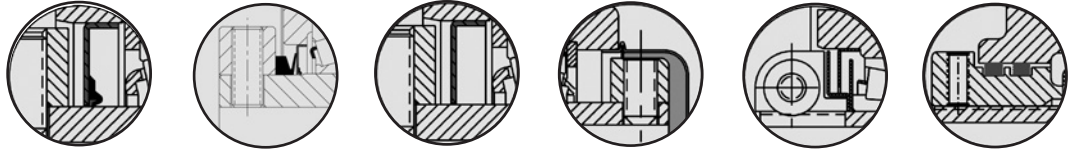
NS NOT SEAL LIMITED

NOTES:

¹ - HIGH TEMPERATURE IS ABOVE 225°F

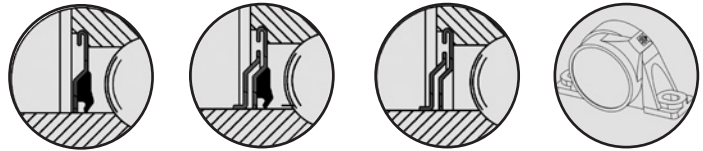
² - CONSIDERATION OF HIGH SPEED CAN BE A FUNCTION OF TYPE AND BEARING DESIGN

TAPERED ROLLER BEARINGS



ENVIRONMENT APPLICATION	SINGLE LIP SEAL W/ COLLAR FLINGER E, K, DI, TAF	E-TECT SEAL E, K, DI, TAF	METAL SHIELD W/ COLLAR FLINGER E, K, DI, TAF	END COVER K, DI, TAF	LABYRINTH SEAL TYPE C	DUAL PISTON RING LABYRINTH SEAL SPECIAL DUTY ALL-STEEL
Dusty/Dirty	+	++	▲	++	▲	+
Wet/Moisture Laden	+	++	○	++	▲	▲
High Pressure Washdown	+	+	○	++	○	▲
¹ High Temperature	○	○	+	+	+	+
² High Speed	○	○	++	NS	+	+
Chemical	▲	▲	○	+	○	○
Misalignment	NS	NS	NS	NS	NS	NS

BALL BEARINGS



- ++ VERY GOOD
- + GOOD
- ▲ QUESTIONABLE (DEPENDS ON CONDITION; CONSULT DODGE ENGINEERING)
- NOT RECOMMENDED
- NS NOT SEAL LIMITED

NOTES:

- ¹ - HIGH TEMPERATURE IS ABOVE 225°F
- ² - CONSIDERATION OF HIGH SPEED CAN BE A FUNCTION OF TYPE AND BEARING DESIGN

ENVIRONMENT APPLICATION	SINGLE LIP SEAL STANDARD ALL BALL BEARINGS EXCEPT Grip Tight, D-LOK, COATED, AND EZ-KLEEN PRODUCTS	SINGLE LIP SEAL W/ FLINGER OPTIONAL SC, SCM, SXR BALL BEARINGS, STANDARD ON Grip Tight, D-LOK, COATED, AND EZ-KLEEN PRODUCTS	METAL SHIELD W/ FLINGER OPTIONAL SC, SCM, SXR, D-LOK & Grip Tight BALL BEARINGS STANDARD ON HIGH TEMP. BRGS.	END COVER BALL BEARINGS
Dusty/Dirty	+	++	▲	++
Wet/Moisture Laden	+	+	○	++
High Pressure Washdown	▲	+	○	++
² High Temperature	○	○	+	▲
² High Speed	▲	▲	++	NS
Chemical	▲	▲	○	+
Misalignment	NS	NS	NS	NS

BALDOR
A MEMBER OF THE ABB GROUP

Baldor Electric Company

P.O. Box 2400, Fort Smith, AR 72902-2400 U.S.A., Ph: (1) 479.646.4711, Fax (1) 479.648.5792, International Fax (1) 479.648.5895

Baldor - Dodge

6040 Ponders Court, Greenville, SC 29615-4617 U.S.A., Ph: (1) 864.297.4800, Fax: (1) 864.281.2433

www.baldor.com