

# Heim® AeroCres® Ball Bearing Rod Ends

RBC Bearings offers a full line of Heim® Corrosion Resistant Ball Bearing Rod Ends supporting low torque, precision industrial applications that require superior corrosion resistance, minimal backlash, under loads.



**Heim® AeroCres® Ball Bearing Rod Ends** are precision ground to tight tolerances for applications requiring self alignment, low torque and reduced radial clearance. They are greased and equipped with PTFE seals bonded to corrosion resistant caps.

The rod end body is selectively heat treated offering a combination of a fractured tough head, ductile shank and a carburized raceway to provide a robust construction.

The rod end body, inner race and balls are made from corrosion resistant materials; 4 times more corrosion resistant than standard ball bearing rod ends. This allows for longer service life and extends scheduled maintenance intervals, preventing costly, unplanned system shutdowns.



## Product Features and Benefits:

- ✓ Corrosion resistant materials
- ✓ PTFE seals/corrosion resistant caps
- ✓ Low torque and radial clearance
- ✓ Misalignment capability
- ✓ Longer life, less maintenance cost
- ✓ Reach/RoHS compliant
- ✓ Food Grade compatible grease available

## Applications:

- ✓ Amusement Park Rides
- ✓ Food & Beverage Machinery
- ✓ Material Handling
- ✓ Medical Diagnostic Systems
- ✓ Food Processing
- ✓ Transmission Brake Linkage



RBC Bearings® has been producing bearings in the USA since 1919. In addition to unique custom bearings, RBC Bearings® offers a full line of standard industrial and aerospace bearings, including:



### Tapered Roller Thrust Bearings

Case-hardened tapered roller thrust bearings for oilfield top drives and swivels. Available in full complement, maximum capacity versions.



### Thin Section Ball Bearings

Standard cross sections to one inch. Bore sizes to 40 inches. Stainless steel and other materials are available. Seals are available on all sizes and standard cross sections. Super duplex configurations.



### Cam Followers

Standard stud, heavy stud, yoke type, caged roller followers. Patented RBC Roller® cylindrical roller cam followers, HexLube® universal cam followers, airframe track rollers.



### Cylindrical Roller Bearings

Cylindrical roller bearings designed for mud pump pinion and eccentric positions. Fully interchangeable to industry standards.



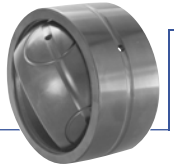
### Needle Roller Bearings

Pitchline® caged heavy duty needle roller bearings ideal for cross head bearings applications. These double row bearings are available in single row and TandemRoller® versions.



### Commercial Rod Ends

Commercial and industrial, precision, Mil-Spec series, self-lubricating, and aircraft. Sold under the Heim®, Unibal®, and Spherco® names. Available in inch and metric sizes.



### Spherical Plain Bearings

Radial, angular contact, extended inner ring, high misalignment. QuadLube®, ImpactTuff®, SpreadLock® Seal, CrossLube®, DuraLube™, and self-lubricating bearings. Available in inch and metric sizes.



### Tapered Roller Bearings

Single, double, & multi row versions available for main bearing positions in mud pumps, gear boxes, etc. Bearings are constructed of case hardened steel washers and rollers with bore size of 11" or greater.



### TP Series Bearings

RBC Bearings® TP Series cylindrical roller thrust bearings ideal for crane hooks, oil well swivels, winch systems, and gear boxes. Fully interchangeable with industry standard offering.



### Keyless Locking Devices

Mechanical bushings used to connect power transmission components onto rotating shafts. Without the use of keyways, KLDs eliminate the problems associated with backlash including fretting, corroding, and wallowing.



### Lubron® Bearings

Lubron® self-lubricating bearings designed and custom manufactured in most any size, material and bearing configuration. Applications include hydro power and water control, nuclear power generation, infrastructure, architecture, offshore marine, industrial, machinery and heavy equipment.



### Shaft Collars

Used to position or locate a component on a shaft. Made from mild steel, type 303 or 316 stainless steel, aluminum, or acetal. Available in inch and metric sizes.



### Self-Lubricating Bearings

Radial, thrust, rod ends, spherical bearings, high temperature, high loads. Available in inch and metric sizes. Fiberglide® self-lubricating bearings.



### Specials

RBC Bearings® manufactures many specialty bearings for the aerospace, oil and energy, semiconductor equipment, packaging, transportation, and other industries.



### Ball Bearings

Precision ground, semiground, unground. High loads, long life, smooth operation. Nice® branded products are offered in caged and full complement configurations.



### Rigid Couplings

Shaft couplings serve as components to time, join, or align shafts at lower speeds and torque, especially when zero backlash is desired. Made from mild steel with a black oxide finish type 303 stainless steel, or aluminum. Available in inch and metric sizes.



### PIC Design

Complete line of precision gears, precision hardware, timing belts, pulleys, and linear motion systems. Industries served include industrial, aerospace, defense, medical, robotics and automation, material handling, and assembly. Custom design support for unique applications.