



BEARINGS, SEALS, AND LUBE



UNMOUNTED BALL BEARINGS

Aetna, Alinabal, Aurora, Barden, Bearings Limited, Berliss, Consolidated, EDT, General, Kaydon, KOYO, Nachi, Nook, NTN, Osborn, Pacific Bearing, Schaeffler - FAG - INA, Schatz, Scheerer, Silverthin, SKF, Thomson, Timken, USDI

- ▲ Angular Contact
- ▲ Deep Groove
- ▲ Double Row
- ▲ Inch
- ▲ Linear
- ▲ Metric
- ▲ Open Snap Ring
- ▲ Sealed
- ▲ Self-Aligning Double Row
- ▲ Shielded
- ▲ Thrust



UNMOUNTED ROLLER BEARINGS

American, Bearings Limited, Bishop Wisecarver, Carter, Consolidated, General, IKO, KOYO, Nachi, Osborn, PCI, RBC, Regal PT - Sealmaster - McGill - Rollway, Schaeffler - FAG - INA, Scheerer, SKF, Smith, THK, Timken

- ▲ Camfollowers
- ▲ Cylindrical
- ▲ Linear
- ▲ Inch
- ▲ Metric
- ▲ Needle
- ▲ Spherical
- ▲ Tapered
- ▲ Thrust



BRONZE, PLASTIC, SLEEVE BEARINGS

Alinabal, Aurora, Bunting, Graphalloy, Isostatic, RBC, Regal PTS McGill - System Plast, Slideway, Symmco, Thomson

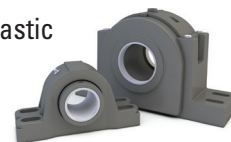
- ▲ Cast Bars
- ▲ Cast Bushings
- ▲ Flanged
- ▲ Nylon
- ▲ Oil Filled
- ▲ Plain Sleeve
- ▲ PTFE
- ▲ Teflon
- ▲ Thrust
- ▲ UHMW
- ▲ Wear Plate



MOUNTED BALL, ROLLER & SLEEVE BEARINGS

Baldor Dodge, Bearings Limited, Bryant, Cooper, Craft, EDT, Graphalloy, High Temp, IPTCI, Kaydon, Miether, NTN, Peer, Regal PTS - System Plast - Browning - Sealmaster, Rexnord, Schaeffler - FAG - INA, SKF, Timken

- | | | | |
|------------------------------------|---------------|-----------|--|
| ▲ Light Medium & Heavy Duty | ▲ Bronze | ▲ Sleeve | ▲ Food Grade Stainless Steel & Plastic |
| ▲ 2 & 4 Bolt Pillow Blocks | ▲ Fully Split | ▲ Cast | ▲ Shaft Covers |
| ▲ 2-3-4-6-8 Bolt & Piloted Flanges | ▲ Hangers | ▲ Ductile | ▲ High Temp |
| ▲ Babbitt | ▲ Take-ups | ▲ Steel | |


SEALS

APG, Baldor Dodge, Dichtomatik, Garlock, RT Dygert, SKF C/R, Timken National-Garlock-JM Clipper, US Seal

- | | | |
|--------------------|-----------------|------------|
| ▲ Oil Seals | ▲ O'Rings | ▲ Silicone |
| ▲ Hydraulic Seals | ▲ Back up Rings | ▲ UHMW |
| ▲ Mechanical Seals | ▲ Buna N | |
| ▲ V-rings | ▲ Viton | |


HARDWARE & TOOLS

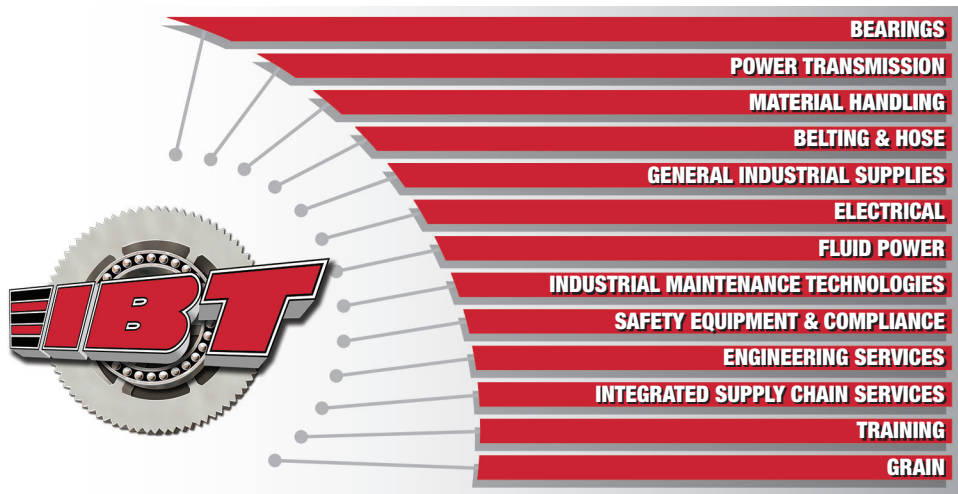
3M, Bondhus, Camel Grinding Wheels, Dewalt, Fenner, GL Huyett, ITW Dykem, Jet Mfg, Koch Filters, Koyo, Loctite, Martin Tools, Milwaukee, MK Norse, Oil Safe, Posilock, Precision Brands, Proto, Regal PTS Kopflex & Morse, Renold Jeffery, Rexnord, Roto-Clip, Rust-Oleum, Schaeffler, Siemens Flender, SKF, SPX, System Components, Timken, Timken Drives, Vibralign

- | | | |
|--------------|------------------|------------|
| ▲ Snap Rings | ▲ Grinding Tools | ▲ Cleaners |
| ▲ Hand Tools | ▲ Paint | |


LUBRICATION - OILS, GREASES, ADHESIVES, SILICONES, EQUIPMENT

Champion Brands, CRC, Fiske Bros. Lubriplate, Fuchs, GL Huyett, Graco, ITW LPS, JAX, JIT Silicone, Loctite, NTN, Oil Safe, Perma, Schaeffler, SKF Alemite, SKF Lincoln, Timken, WD 40

- | | | | |
|---------------|--------------|---------------------|----------|
| ▲ Carbon Base | ▲ Gear | ▲ High & Low Temp | ▲ Zerks |
| ▲ Synthetic | ▲ General | ▲ Sprays | ▲ Pumps |
| ▲ Food Grade | ▲ Vacuum | ▲ Grease Guns | ▲ Valves |
| ▲ Hydraulic | ▲ Compressor | ▲ Auto Lube Systems | |


What Can We Do For You Today?


IBT, Inc. is a leading full service industrial supplier. Since 1949, IBT has been helping customers maintain efficient, productive, and safe workplace facilities through quality industrial MRO supplies, products, and services. Top-notch industrial expertise and superior customer service set IBT apart. IBT has nearly 50 stocking locations throughout the United States, and is headquartered in the Kansas City suburb of Merriam, Kansas.

For an IBT location near you
 call 1-800-332-2114 or visit www.ibtinc.com

Copyright © 2016 IBT, Inc. All rights reserved.