

Mounted Spherical Roller Bearings

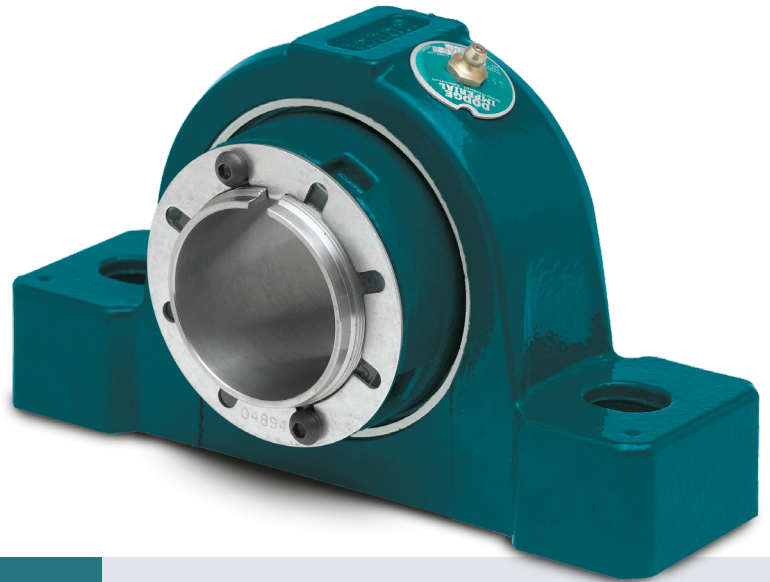
Easy installation and removal

The ISN series of mounted spherical roller bearings features a patented tapered adapter sleeve to streamline installation and dismount without damaging the shaft.

ISN mounted bearings arrive completely assembled to be shaft-ready straight out of the box—saving valuable time and expenses.

As part of the Dodge® roller bearing legacy spanning over 100 years, ISN mounted bearings are long-lasting solutions ideal for a variety of applications to keep your operations up and running.

ISN is available in multiple housing styles and bore sizes.



ISN benefits

- Factory sealed and greased
- Patented sealing for extended life
- Fully concentric on the shaft
- Interchangeable with SN-dimensioned housings
- Convertible in the field both ways between non-expansion and expansion

End covers for safety and reliability

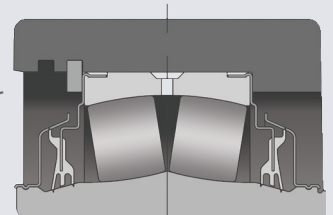
Optional end covers keep workers safe from rotating shafts and provide an additional layer of protection by preventing contaminants from coming in contact with the seal. ISN end covers are designed for durability, ease of installation, and increased reliability. Both open and closed versions are available to fit any application need.



Innovative sealing solutions

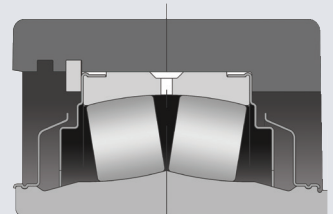
The TRIDENT™ contact seal is extremely effective for dirty environments, low-to-medium speeds, and normal ambient conditions.

Made of nitrile material, this triple-lip rubbing seal has a low coefficient of friction, and its seal land maintains full seal contact even when misaligned.



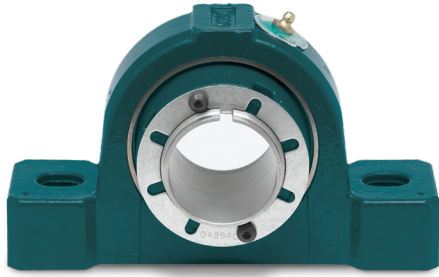
TRIDENT seal

With corrosion-resistant flingers and steel clearance seals, the labyrinth seal is ideal for higher speeds and higher operating temperatures.



Labyrinth seal

ISN benefits over standard SN products



ISN mounted spherical roller bearing

- Factory greased and sealed
- Initial grease fill included with bearing
- Arrives as a single, shaft-ready unit
- Constant seal pressure in misaligned conditions
- Seal retains grease near the rollers
- Simple clearance setting, no special tools needed
- Easy, intuitive removal

Standard SN products

- User packs grease, subject to onsite contamination
- Customer pays extra for initial grease fill
- Three or more packages, user-assembled
- Diminished seal pressure in misaligned conditions
- Grease migrates away from rollers to housing cavity
- Requires feeler gauges
- Difficult to remove

ISN part numbers

Bore (mm)	Housing									
	2-bolt plummer block				4-bolt plummer block				End Cover	
	Non-expansion		Expansion		Non-expansion		Expansion			
TRIDENT seal	Labyrinth seal	TRIDENT seal	Labyrinth seal	TRIDENT seal	Labyrinth seal	TRIDENT seal	Labyrinth seal	Closed	Open	
30	071000	071034	071017	071051	-	-	-	-	069960	070251
35	071001	071035	071018	071052	-	-	-	-	069960	070252
40	071002	071036	071019	071053	-	-	-	-	069961	070253
45	071003	071037	071020	071054	-	-	-	-	-	-
50	071004	071038	071021	071055	-	-	-	-	069962	070255
55	071005	071039	071022	071056	-	-	-	-	069963	070256
60	071006	071040	071023	071057	-	-	-	-	069964	070257
65	071007	071041	071024	071058	-	-	-	-	069965	070258
70	071008	071042	071025	071059	-	-	-	-	069965	070259
75	071009	071043	071026	071060	-	-	-	-	069965	070260
80	071010	071044	071027	071061	-	-	-	-	069966	070261
85	071011	071045	071028	071062	-	-	-	-	069966	070262
90	071012	071046	071029	071063	-	-	-	-	069967	070263
100	071013	071047	071030	071064	-	-	-	-	069967	070264
110	071014	071048	071031	071065	-	-	-	-	069968	070265
115	071015	071049	071032	071066	-	-	-	-	069969	070266
125	071016	071050	071033	071067	-	-	-	-	069969	070267
135	071102	071104	071103	071105	-	-	-	-	-	-
140	071106	071108	071107	071109	-	-	-	-	069983	070268
150	-	-	-	-	078822	-	078823	-	069984	070269
160	-	-	-	-	078824	141379	078825	141380	069985	070270
170	-	-	-	-	078826	-	078827	-	069985	070271

