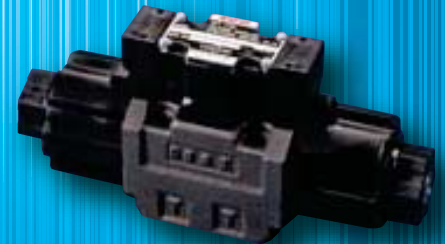
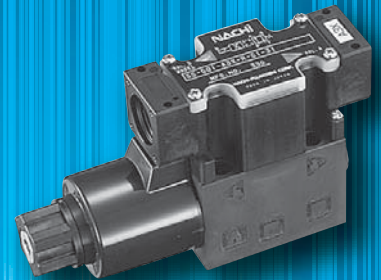
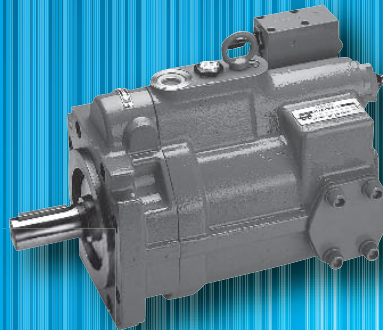
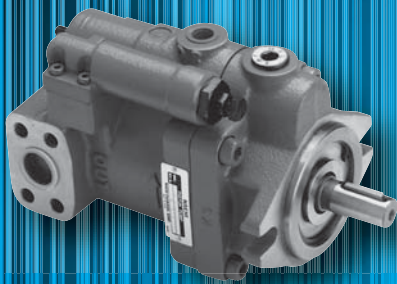




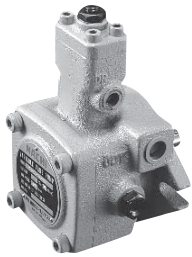
Hydraulic Equipment

for Industrial Machines



Pumps

Vane Pumps



VDS-0B



VDC Series

Features

- Low Vibration and Noise
- High Efficiency Operation with Minimal Power Loss
- Precise Characteristics, Prompt Response

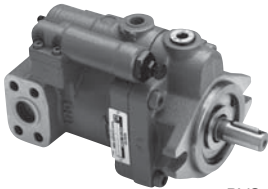
Series	Mounting flange	Max. pressure MPa(psi)	Max. flow L/min(gpm) at 1800rpm
VDS-0B-1A3-**-	SAE A 2 bolts	7 (1015)	15 (4.0)
VDC-1B-1A5-**-	SAE A 2 bolts (Note 1)	14 (2030)	30 (7.9)
VDC-1B-2A3-**-	SAE A 2 bolts (Note 1)	7 (1015)	40 (10.6)
VDC-2B-1A5-**-	SAE B 2 bolts (Note 2)	14 (2030)	54 (14.3)
VDC-2B-2A3-**-	SAE B 2 bolts (Note 2)	7 (1015)	70 (18.5)
VDC-3B-1A5-**-	SAE C 2 bolts	14 (2030)	120 (31.7)

Notes:

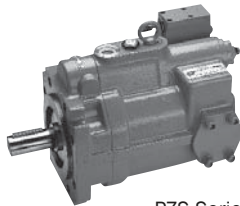
Note 1 VDC-1B-A*-E35 only has a SAE A 2 bolts type flange.

Note 2 VDC-2B-A*-E35 only has a SAE B 2 bolts type flange.

Piston Pumps



PVS Series



PZS Series

Features

- Energy-saving type with drastically reduced loss.
- Because of increasing the number of pistons,(from 9 to 11) they operate with low-noise and low-pulsation. (PVS-2B, PZS)
- Many optional functions available.

Series	Mounting flange	Max. pressure MPa(psi)	Max. flow L/min(gpm) at 1800rpm
PVS-0B-8N3-**-	SAE A 2 bolts	21 (3045)	14 (3.7)
PVS-1B-16N3-**-	SAE A 2 bolts	21 (3045)	29 (7.7)
PVS-1B-22N3-**-	SAE A 2 bolts	21 (3045)	40 (10.6)
PVS-2B-35N3-**-	SAE B 2 bolts	21 (3045)	63 (16.6)
PVS-2B-45N3-**-	SAE B 2 bolts	21 (3045)	81 (21.4)
PZS-3B-70N4-**-	—	28 (4060)	126 (33.3)
PZS-4B-100N4-**-	SAE D 4 bolts	28 (4060)	180 (47.6)
PZS-5B-130N4-**-	SAE E 4 bolts	25 (3625)	234 (61.8)
PZS-6B-180N4-**-	SAE E 4 bolts	25 (3625)	324 (85.6)

Uni-Pump



UVN Series

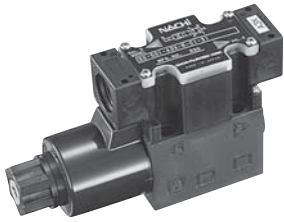
Features

- Energy Efficient Performance
- Lightweight, Compact Design
- Low Noise, Long Life
- 230vac and 460vac Electric Motors Available

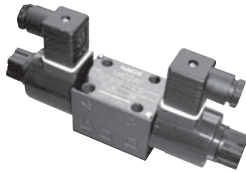
Series	Max. pressure MPa(psi)	Max. flow L/min(gpm) at 1800rpm
UVN-1A-0A4-**-	8(1160)	14(3.7)
UVN-1A-1A4-**-	8(1160)	29(7.7)

■ Directional Control Valves

G01 Size Solenoid Operated Directional Control Valves



SS-G01 Series



SA-G01 Series

Features

- Recognized by Overseas Safety Standards (UL, CSA and CE)
- High Pressure, Large Capacity with Minimal Pressure Loss
- Low Power Consumption of Coil
- Indicator Light and COM Port Come Standard (SS-G01)
- M12 4 Pin Connector Available For Simple Wiring
- Low Switching Noise
- Very Long Life

Series	Electrical Connection	Interface	Max. pressure MPa(psi)	Max. flow L/min(gpm)
SS-G01-**-E31	Terminal Box	ISO 4401-03-02-0-94	35 (5075)	100 (26.4)
SA-G01-**-E31	DIN Connector	ISO 4401-03-02-0-94	35 (5075)	100 (26.4)

G03 Size Solenoid Operated Directional Control Valves



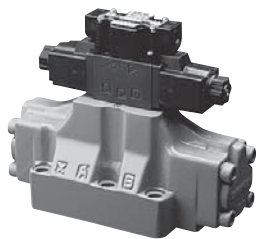
SS-G03 Series

Features

- Recognized by Overseas Safety Standards (UL and cUL)
- High Pressure, Large Capacity with Minimal Pressure Loss
- Low Power Consumption of Coil
- Indicator Light and COM Port Come Standard (SS-G03)
- Low Switching Noise
- Very Long Life

Series	Electrical Connection	Interface	Max. pressure MPa(psi)	Max. flow L/min(gpm)
SS-G03-**-E22	Terminal Box	ISO 4401-05-04-0-94	35 (5075)	160 (42.3)
SA-G03-**-E21	DIN Connector	ISO 4401-05-04-0-94	35 (5075)	160 (42.3)

Solenoid Controlled Pilot Operated Directional Valves



DSS-G06 Series

Features

- Recognized by UL
- High Pressure, Large Capacity with Minimal Pressure Loss
- Low Power Consumption of Coil
- Indicator Light and COM Port Come Standard (DSS-G06)
- Built-in Pilot Pressure Check Valve

Series	Electrical Connection	Interface	Max. pressure MPa(psi)	Max. flow L/min(gpm)
DSS-G06-**-E22	Terminal Box	ISO 4401-08-07-0-94	32 (4640)	600 (158.5)
DSA-G06-**-E22	DIN Connector	ISO 4401-08-07-0-94	32 (4640)	600 (158.5)

Manually Operated Directional Control Valves

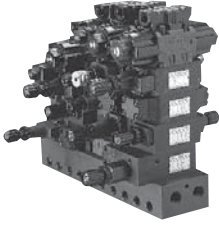


DMA Series

Series	Interface	Max. pressure MPa(psi)	Max. flow L/min(gpm)
DMA-G01-**-E20	ISO 4401-03-02-0-94	35 (5075)	40 (10.6)
DMA-G03-**-E20	ISO 4401-05-04-0-94	35 (5075)	100 (26.4)

■ Modular Valves

Modular Valves Series



Modular Valve Series

Features

- Quick and Easy Circuit Configuration, Changes and Additions
- Compact Module Configurations Greatly Reduce Space Requirements and Maintenance Costs

Mounting and Size	Interface	Max. pressure MPa(psi)	Max. flow L/min(gpm)
G01	ISO 4401-03-02-0-94	25 (3625)	50 (13.2)
G03	ISO 4401-05-04-0-94	25 (3625)	100 (26.4)

■ Pressure Control Valves

Relief Valves



R Series

Series	Interface	Max. pressure MPa(psi)	Max. flow L/min(gpm)
R-T06-3-E20	NPT 3/4	21 (3045)	170 (44.9)
R-T10-3-E20	NPT 1 1/4	21 (3045)	380 (100.4)

■ Proportional Control Valves

Proportional Pressure Control Valve Series



EPR Series



ER Series

Series	Interface	Max. pressure MPa(psi)	Max. flow L/min(gpm)
EPR-G01-5-E12	ISO 4401-03-02-0-94	35 (5075)	1.2 (0.3)
ER-G03-5-E21	ISO 6264-AR-06-2-A	35 (5075)	150 (39.6)
ER-G06-5-E21	ISO 6264-AS-08-2-A	35 (5075)	320 (84.5)

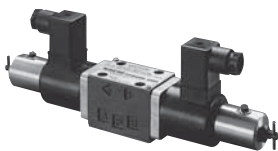
Proportional Flow Control Valve Series



ES Series

Series	Interface	Max. pressure MPa(psi)	Max. flow L/min(gpm)
ES-G02-30-E12	Sub plate	21 (3045)	30 (7.9)
ES-G03-125-E12	Sub plate	21 (3045)	125 (33.0)
ES-G06-250-E11	Sub plate	21 (3045)	250 (66.1)
ES-G10-500-E11	Sub plate	21 (3045)	500 (132.1)

Proportional Directional and Flow Control Valve Series



ESD Series

Series	Interface	Max. pressure MPa(psi)	Max. flow L/min(gpm)
ESD-G01-C520-E12	ISO 4401-03-02-0-94	25 (3625)	25 (6.6)
ESD-G03-C580-E12	ISO 4401-05-04-0-94	25 (3625)	100 (26.4)
ESD-G06-C5250-E13	ISO 4401-08-07-0-94	25 (3625)	250 (66.1)

NACHI

NACHI AMERICA INC.

715 Pushville Rd., Greenwood, IN 46143 • Tel. (800) 622-4410 Fax. (317) 530-1015
 Email: hydraulics@nachi-america.com www.nachi-america.com