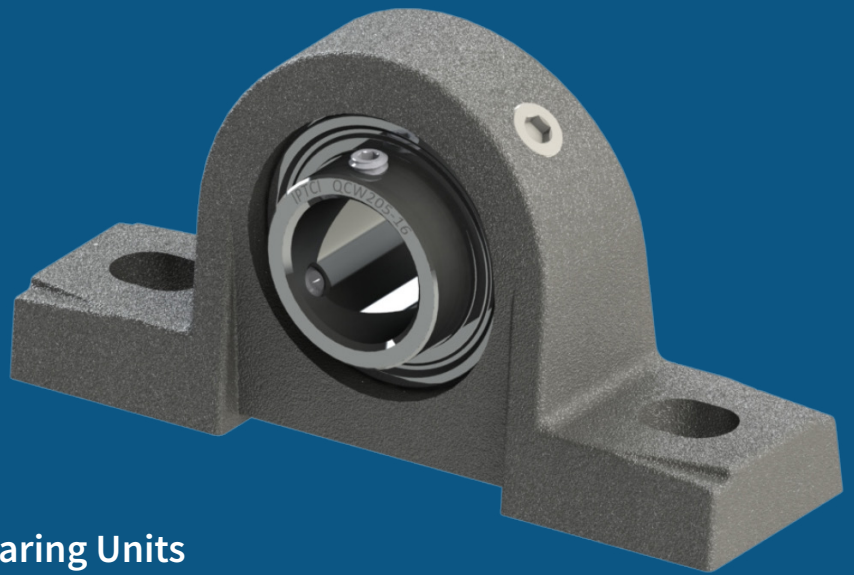




SOLUTIONS BY SOLVE »»



QCW SERIES

Car Wash Series Mounted Ball Bearing Units

Car Wash equipment requires bearings & power transmission drive components to meet a unique combination of demands. The nature of the application requires components that provide a high load capacity. The harsh environment defined by almost continuous exposure to washdown and chemical solvents requires components that are corrosion resistant and in the case of bearings protected in a manner that prevents contaminants from entering the raceways.

To address these demands, IPTCI, the leader in corrosion resistant bearings, has developed the QCW series of mounted ball bearings.



FEATURES

CORROSION RESISTANT HOUSINGS: A sturdy, stress-resistant housing with corrosion protection for car wash equipment.

LUBED FOR LIFE INSERT: The QCW Series is a unique insert bearing with a complex combination of high load capacity and corrosion resistance.

QUAD-LIP SILICON SEAL: Provides superior element protection and internal grease containment.

BENEFITS

»» **PROJECTED 2X-3X EXTENDED LIFE:**
In typical car wash applications over standard mounted units.

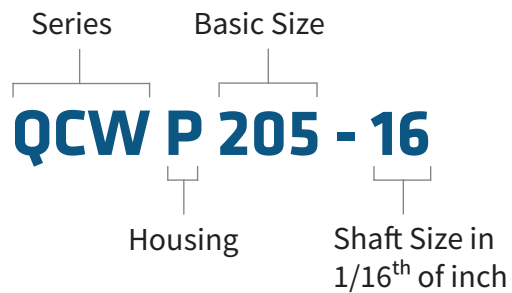
»» **MAINTENANCE FREE:**
The superior QL seals result in a maintenance-free bearing that eliminates time and cost associated with re-lubrication.

»» **PROCUREMENT & OPERATIONAL COST SAVINGS:**
Provides a longer life, and a lower acquisition cost than other corrosion resistant options.

QCW Series	205	206	207	208	210	211
Shaft Sizes (inch)	1"	1-1/4"	1-1/4"	1-1/2"	1-15/16" 2"	2"
Pillow Block (P)	•	•	•	•	•	•
Tapped-Base Pillow Block (PA)	•	•	•	•	•	•
4-Bolt Flange (F)	•	•	•	•	•	•
3-Bolt Flanged Bracket (FB)	•	•	•	•	•	•
2-Bolt Flange (FL)	•	•	•	•	•	•

Additional sizes available upon request

Each IPTCI Mounted Ball Bearing part number is a unique combination indicating the bearing's type, series, housing and shaft size.



AT IPTCI BEARINGS, WE ARE PROUD TO BE PART OF THE SOLVE INDUSTRIAL MOTION GROUP

A leading force in the industry known for innovation, reliability, and excellence, with Solve you gain access to a powerhouse of engineering expertise, cutting-edge technology, and an unwavering commitment to customer satisfaction. By partnering with Solve, you can expect unparalleled support, a broader product portfolio, and the confidence that comes from working with a trusted name in the industry. Together, we aim to elevate your industrial operations by providing top-tier solutions, ensuring efficiency, and staying at the forefront of technological advancements. Choose Solve Industrial Motion Group for a partnership that drives your success forward.



IPTCI is part of Solve Industrial Motion Group, an industry-leading manufacturer and supplier of industrial-grade bearings and power transmission components.

800.328.8153 • iptcisales@solveindustrial.com