



This image displays a variety of mechanical components and their corresponding technical drawings. The components include:

- Top Left:** A 3D model of a green coupling mounted on a metal plate, with a 2D drawing showing dimensions A, B, C, D, E, F, and G.
- Top Center:** A 3D model of a bracket with a 2D drawing showing dimensions A, B, C, D, E, F, and G.
- Top Right:** A 3D model of a shaft with a coupling, with a 2D drawing showing dimensions A, B, C, D, E, F, and G.
- Middle Left:** A 3D model of a bracket with a 2D drawing showing dimensions A, B, C, D, E, F, and G.
- Middle Center:** A 3D model of a bracket with a 2D drawing showing dimensions A, B, C, D, E, F, and G.
- Middle Right:** A 3D model of a bracket with a 2D drawing showing dimensions A, B, C, D, E, F, and G.
- Bottom Left:** A 3D model of a bracket with a 2D drawing showing dimensions A, B, C, D, E, F, and G.
- Bottom Center:** A 3D model of a bracket with a 2D drawing showing dimensions A, B, C, D, E, F, and G.
- Bottom Right:** A 3D model of a bracket with a 2D drawing showing dimensions A, B, C, D, E, F, and G.

CONVEYING SOLUTIONS

KWS PROFILE

Founded in 1972, KWS designs and manufactures conveying equipment for the bulk material handling industry. As an ISO 9001 certified manufacturer, KWS provides the highest quality equipment and service. KWS is committed to total customer satisfaction. Our quality system ensures that your equipment is designed and manufactured to rigid specifications and validated by exceeding performance expectations.

KWS also offers complete system design and engineered solutions. KWS is the largest screw conveyor manufacturer in North America and has experienced over 700-percent growth in the past ten years.

KWS READY-TO-SHIP CEMA STANDARD COMPONENTS

KWS maintains a large inventory of CEMA (Conveyor Equipment Manufacturing Association) standard Components in Motion distribution centers, available for immediate shipment. CEMA standard components are stocked in carbon steel as well as stainless steel construction.



TABLE OF CONTENTS

CARBON STEEL STOCK COMPONENTS

Helicoid Flighting	1	Plate Seals	8
Sectional Flighting	1	Waste Pack Seals	9
Helicoid Screws	2	Split Gland Seals	9
Sectional Screws	2	Flanged Gland Seals	10
Angle Flange U-Troughs	3	U-Trough Covers	10
Formed Flange U-Troughs	3	Inlet Spouts	11
2-Bolt Coupling Shafts	4	U-Trough Discharge Spouts	11
2-Bolt End Shafts	4	Trough Saddles	12
Style 216 Hangers for U-Troughs	5	Trough Feet	12
Style 226 Hangers for U-Troughs	5	Coupling Bolts (Grade 5)	13
Style 216 Hanger Bearings	6	Screw Clamps	13
Style 226 Hanger Bearings	7		
Trough Ends (with Foot)	8		

STOCK COMPONENTS FOR THE RENDERING INDUSTRY

Rendering Screws	14	3-Bolt Close Coupling Shafts	15
Rendering U-Troughs	14	3-Bolt End Shafts	15
3-Bolt Coupling Shafts	15		

304 STAINLESS STEEL STOCK COMPONENTS

304 SS Helicoid Screws	16	304 SS U-Trough Covers	18
304 SS Formed Flange U-Troughs	16	304 SS U-Trough Discharge Spouts	19
304 SS 2-Bolt Coupling Shafts	17	304 SS Coupling Bolts	19
304 SS 2-Bolt End Shafts	17	304 SS Screw Clamps	19
304 SS Style 226 Hangers for U-Troughs	18		

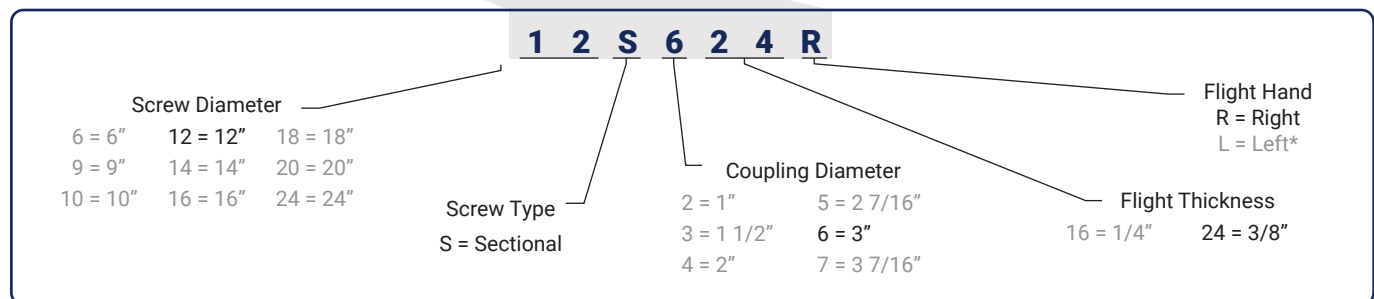


HOW TO USE THE KWS CEMA STOCK COMPONENTS GUIDE

The Conveyor Equipment Manufacturer's Association (CEMA) has developed dimensional standards for all basic screw conveyor components. Every screw conveyor manufacturer that is a member of CEMA produces CEMA stock components to the same dimensions and tolerances. Although KWS quality is the best in the industry, CEMA components are dimensionally interchangeable between manufacturers.

The KWS CEMA Stock Components Guide makes it easy to select the right screw conveyor components for your Customer. The guide details the part number nomenclature for every screw conveyor component. KWS part numbers describe the component by the sequential arrangement of numbers and letters. Every individual digit in the complete part number corresponds to a significant feature or dimension that is critical to the selection of the correct part. The following example of a nomenclature selection table shows how simple it is to select the correct product for your application.

SECTIONAL SCREWS					
Stock Part Number	Conveyors, Inc. Part Number	Martin Part Number	Stock Part Number	Conveyors, Inc. Part Number	Martin Part Number
6S316R	6S316-R	6S316R	14S516R	14S516-R	14S516R
9S316R	9S316-R	9S316R	14S624R	14S624-R	14S624R
9S324R	9S324-R	9S324R	16S624R	16S624-R	16S624R
9S424R	9S424-R	9S424R	18S624R	18S624-R	18S624R
12S416R	12S416-R	12S416R	20S624R	20S624-R	20S624R
12S424R	12S424-R	12S424R	20S724R	20S724-R	20S724R
12S524R	12S524-R	12S524R	24S724R	24S724-R	24S724R
12S624R	12S624-R	12S624R			

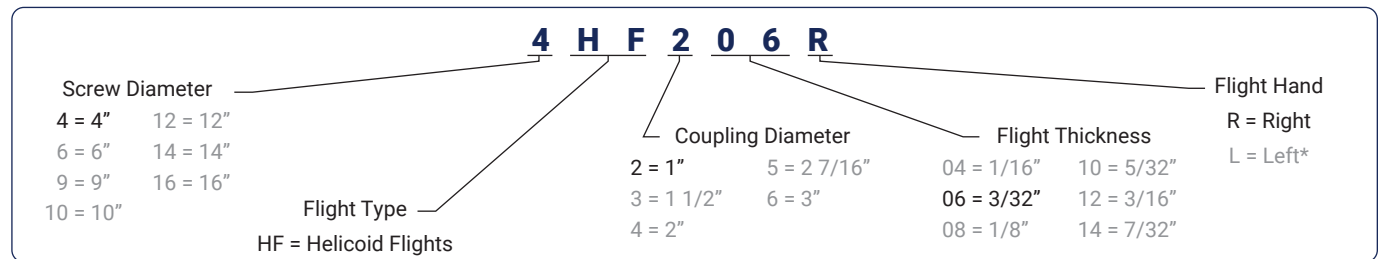


Once you have determined the KWS part number, the MINO is given for easy cross-reference. If you know the MINO, you can also cross reference to the KWS part number. All KWS stock part numbers are coded and loaded in the Motion Industries computer system.

As specified in the guide, KWS provides interchangeable CEMA screw conveyor stock components that are conveniently available for purchase through Motion's Supplier Connect. In addition, KWS Sales, Customer Service, and Engineering groups are always ready and willing to assist you with any stock, MTO, or highly engineered screw conveyor system. KWS is well positioned to continue growing with Motion Industries!

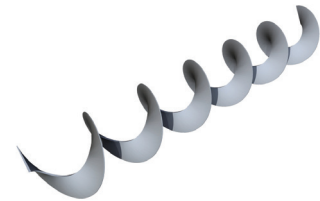
CARBON STEEL STOCK COMPONENTS

HELICOID FLIGHTING



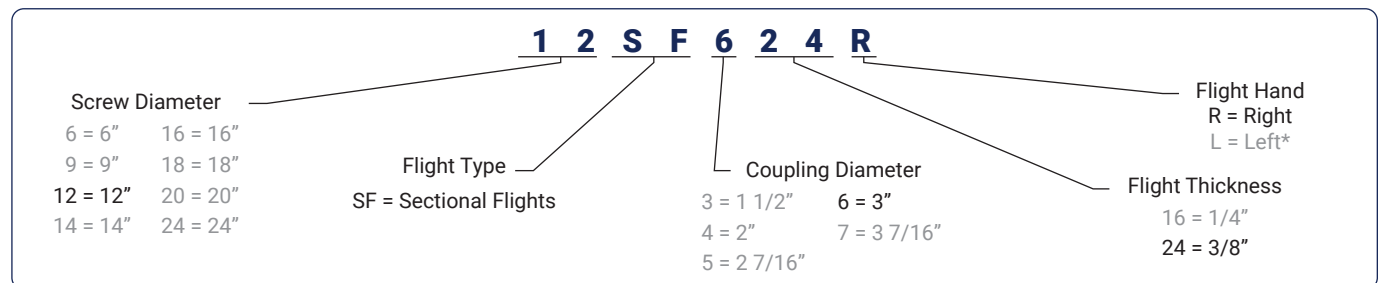
HELICOID FLIGHTING					
Stock Part Number	Conveyors, Inc. Part Number	Martin Part Number	Stock Part Number	Conveyors, Inc. Part Number	Martin Part Number
4HF206R	4HF206-R	4HF206R	12HF412R	12HF412-R	12HF412R
6HF304R	6HF304-R	6HF304R	12HF508R	12HF508-R	12HF508R
6HF308R	6HF308-R	6HF308R	12HF512R	12HF512-R	12HF512R
6HF312R	6HF312-R	6HF312R	12HF614R	12HF614-R	12HF614R
9HF306R	9HF306-R	9HF306R	14HF508R	14HF508-R	14HF508R
9HF312R	9HF312-R	9HF312R	14HF614R	14HF614-R	14HF614R
9HF406R	9HF406-R	9HF406R	16HF610R	16HF610-R	16HF610R
9HF414R	9HF414-R	9HF414R	16HF614R	16HF614-R	16HF614R
12HF408R	12HF408-R	12HF408R			

Note: All flights are full pitch. *Left hand flights are non-stock.



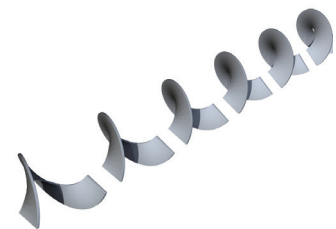
Helicoid Flighting is cold rolled from special steel into a continuous helix that produces a work-hardened, smoothly finished flighting surface. Cost-effective helicoid flighting provides superior strength with diameter, pitch and thickness closely controlled.

SECTIONAL FLIGHTING



SECTIONAL FLIGHTING					
Stock Part Number	Conveyors, Inc. Part Number	Martin Part Number	Stock Part Number	Conveyors, Inc. Part Number	Martin Part Number
6SF316R	6SF316-R	6SF316R	14SF516R	14SF516-R	14SF516R
9SF316R	9SF316-R	9SF316R	14SF624R	14SF624-R	14SF624R
9SF324R	9SF324-R	9SF324R	16SF624R	16SF624-R	16SF624R
9SF424R	9SF424-R	9SF424R	18SF624R	18SF624-R	18SF624R
12SF416R	12SF416-R	12SF416R	20SF624R	20SF624-R	20SF624R
12SF424R	12SF424-R	12SF424R	20SF724R	20SF724-R	20SF724R
12SF524R	12SF524-R	12SF524R	24SF724R	24SF724-R	24SF724R
12SF624R	12SF624-R	12SF624R			

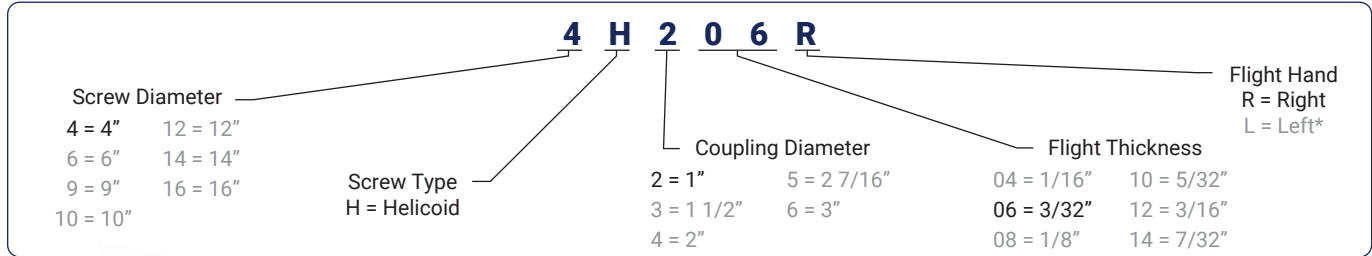
Note: All flights are full pitch. *Left hand flights are non-stock.



Sectional Flighting is manufactured from steel plate and formed into a 360° section of flighting. Sectional flighting is available in heavier thicknesses than helicoid flighting and suitable for more abrasive applications.

CARBON STEEL STOCK COMPONENTS

HELICOID SCREWS

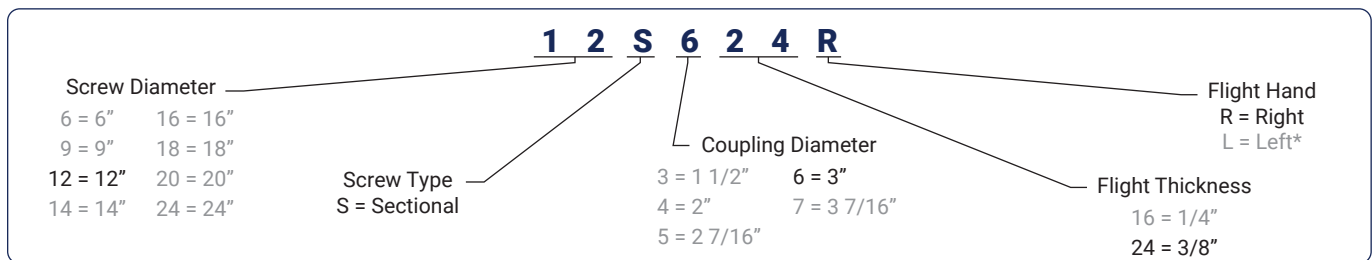


Helicoid Screws are manufactured by mounting helicoid flighting on a center pipe and fastening by intermittent welds. Internal collars are inserted in each end and plug welded to accommodate shafts. Screws are structurally reinforced at the ends by end lugs.

HELICOID SCREWS					
Stock Part Number	Conveyors, Inc. Part Number	Martin Part Number	Stock Part Number	Conveyors, Inc. Part Number	Martin Part Number
4H206R	4H206-R	4H206R	12H412R	12H412-R	12H412R
6H304R	6H304-R	6H304R	12H508R	12H508-R	12H508R
6H308R	6H308-R	6H308R	12H512R	12H512-R	12H512R
6H312R	6H312-R	6H312R	12H614R	12H614-R	12H614R
9H306R	9H306-R	9H306R	14H508R	14H508-R	14H508R
9H312R	9H312-R	9H312R	14H614R	14H614-R	14H614R
9H406R	9H406-R	9H406R	16H610R	16H610-R	16H610R
9H414R	9H414-R	9H414R	16H614R	16H614-R	16H614R

Note: All screws are full pitch. *Left hand screws are non-stock.

SECTIONAL SCREWS



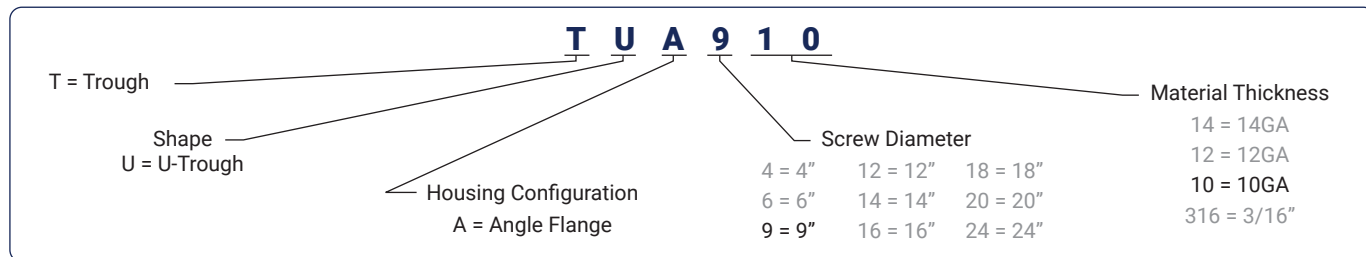
Sectional Screws are manufactured by mounting a 360° section of flighting on a center pipe, butt welding each flight together and fastening by intermittent welds. Internal collars are inserted in each end and plug welded to accommodate shafts. Screws are structurally reinforced at the ends by end lugs.

SECTIONAL SCREWS					
Stock Part Number	Conveyors, Inc. Part Number	Martin Part Number	Stock Part Number	Conveyors, Inc. Part Number	Martin Part Number
6S316R	6S316-R	6S316R	14S516R	14S516-R	14S516R
9S316R	9S316-R	9S316R	14S624R	14S624-R	14S624R
9S324R	9S324-R	9S324R	16S624R	16S624-R	16S624R
9S424R	9S424-R	9S424R	18S624R	18S624-R	18S624R
12S416R	12S416-R	12S416R	20S624R	20S624-R	20S624R
12S424R	12S424-R	12S424R	20S724R	20S724-R	20S724R
12S524R	12S524-R	12S524R	24S724R	24S724-R	24S724R
12S624R	12S624-R	12S624R			

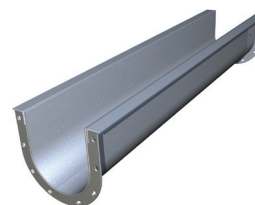
Note: All screws are full pitch. *Left hand screws are non-stock.

CARBON STEEL STOCK COMPONENTS

ANGLE FLANGE U-TROUGHS

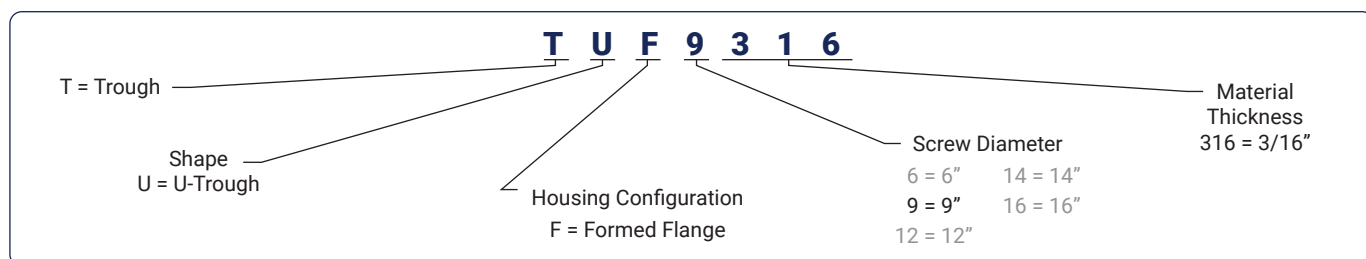


ANGLE FLANGE U-TROUGHS		
Stock Part Number	Conveyors, Inc. Part Number	Martin Part Number
TUA414	AT414	4CTA14
TUA614	AT614	6CTA14
TUA914	AT914	9CTA14
TUA910	AT910	9CTA10
TUA1212	AT1212	12CTA12
TUA1412	AT1412	14CTA12
TUA1612	AT1612	16CTA12
TUA1810	AT1810	18CTA10
TUA20316	AT207	20CTA7
TUA24316	AT247	24CTA7

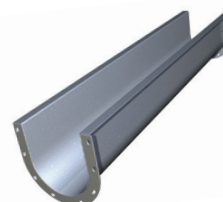


Angle Flange U-Troughs are manufactured with structural angle top flanges to provide extra rigidity. End flanges are jig-welded to ensure proper alignment with other trough sections. Angle flange troughs are suitable for light and medium-duty applications.

FORMED FLANGE U-TROUGHS



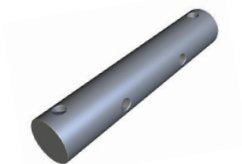
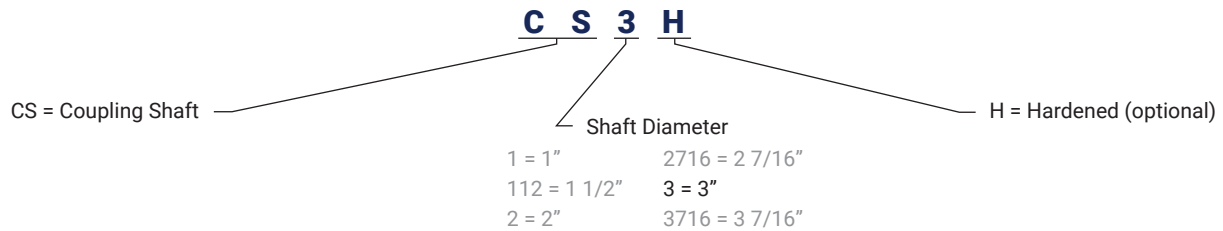
FORM FLANGE U-TROUGHS		
Stock Part Number	Conveyors, Inc. Part Number	Martin Part Number
TUF6316	FT67	6CTF7
TUF9316	FT97	9CTF7
TUF12316	FT127	12CTF7
TUF14316	FT147	14CTF7
TUF16316	FT167	16CTF7



Formed Flange U-Troughs are manufactured with formed top flanges. End flanges are jig-welded to ensure proper alignment with other trough sections. Formed flange troughs are cost-effective, dust-tight and suitable for heavy-duty applications.

CARBON STEEL STOCK COMPONENTS

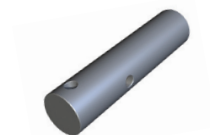
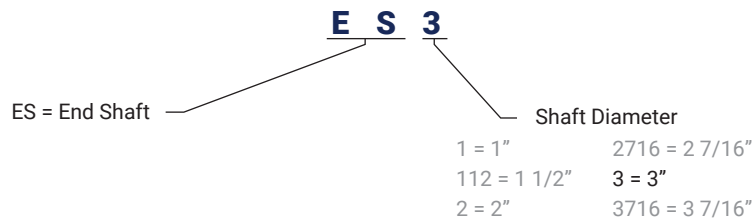
2-BOLT COUPLING SHAFTS



Coupling Shafts are precision cut and drilled to provide an exact fit with helicoid and sectional screws. A space is provided between the screw sections for a hanger and hanger bearing to support additional screw sections. Hardened coupling shafts are required for use with hard iron bearings.

COUPLING SHAFTS		
Stock Part Number	Conveyors, Inc. Part Number	Martin Part Number
CS1	CS1	CC2
CS112	CS112	CC3
CS2	CS2	CC4
CS2716	CS2716	CC5
CS3	CS3	CC6
CS3716	CS3716	CC7

2-BOLT END SHAFTS

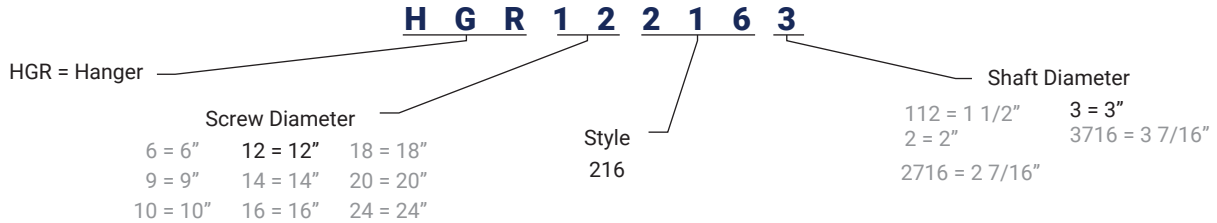


End Shafts are precision cut and drilled to provide an exact fit with helicoid and sectional screws. End shafts are designed to accommodate a variety of shaft seal and flange bearing arrangements.

END SHAFTS		
Stock Part Number	Conveyors, Inc. Part Number	Martin Part Number
ES1	ES1-BBS	CE2BB-W
ES112	ES2-BBS	CE3BB-W
ES2	ES2-BBS	CE4BB-W
ES2716	ES2716-BBS	CE5BB-W
ES3	ES3-BBS	CE6BB-W
ES3716	ES3716-BBS	CE6BB-W

CARBON STEEL STOCK COMPONENTS

STYLE 216 HANGERS FOR U-TROUGHS

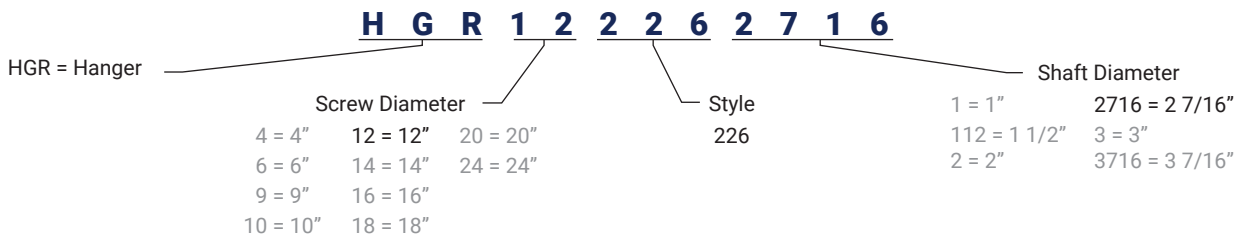


STYLE 216 HANGERS					
Stock Part Number	Conveyors, Inc. Part Number	Martin Part Number	Stock Part Number	Conveyors, Inc. Part Number	Martin Part Number
HGR6216112	H6216112	6CH2163	HGR142163	H142163	14CH2166
HGR9216112	H9216112	9CH2163	HGR162163	H162163	16CH2166
HGR92162	H92162	9CH2164	HGR182163	H182163	18CH2166
HGR122162	H122162	12CH2164	HGR182163716	H182163716	18CH2167
HGR122162716	H122162716	12CH2165	HGR202163	H202163	20CH2166
HGR122163	H122163	12CH2166	HGR202163716	H202163716	20CH2167
HGR142162716	H142162716	14CH2165	HGR242163716	H242163716	24CH2167

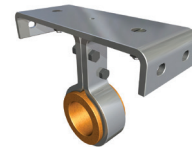


Style 216 Hangers are precision formed from heavy bar stock and U-shaped to offer superior rigidity for extra heavy-duty applications. Style 216 hanger bearings are required for use with 216 hangers.

STYLE 226 HANGERS FOR U-TROUGHS



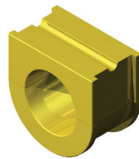
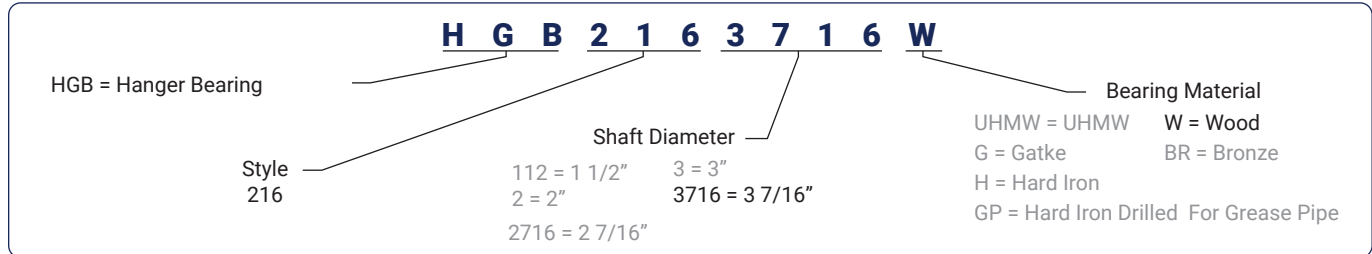
STYLE 226 HANGERS					
Stock Part Number	Conveyors, Inc. Part Number	Martin Part Number	Stock Part Number	Conveyors, Inc. Part Number	Martin Part Number
HGR42261	H42261	4CH2262	HGR142263	H142263	14CH2266
HGR6226112	H6226112	6CH2263	HGR162263	H162263	16CH2266
HGR9226112	H9226112	9CH2263	HGR182263	H182263	18CH2266
HGR92262	H92262	9CH2264	HGR182263716	H182263716	18CH2267
HGR122262	H122262	12CH2264	HGR202263	H202263	20CH2266
HGR122262716	H122262716	12CH2265	HGR202263716	H202263716	20CH2267
HGR122263	H122263	12CH2266	HGR242263716	H242263716	24CH2267
HGR142262716	H142262716	14CH2265			



Style 226 Hangers are precision formed from heavy bar stock and are the most common style of hanger. Bulk material flow is maximized by single leg design. Style 226 hangers are excellent for normal and heavy-duty applications.

CARBON STEEL STOCK COMPONENTS

STYLE 216 HANGER BEARINGS



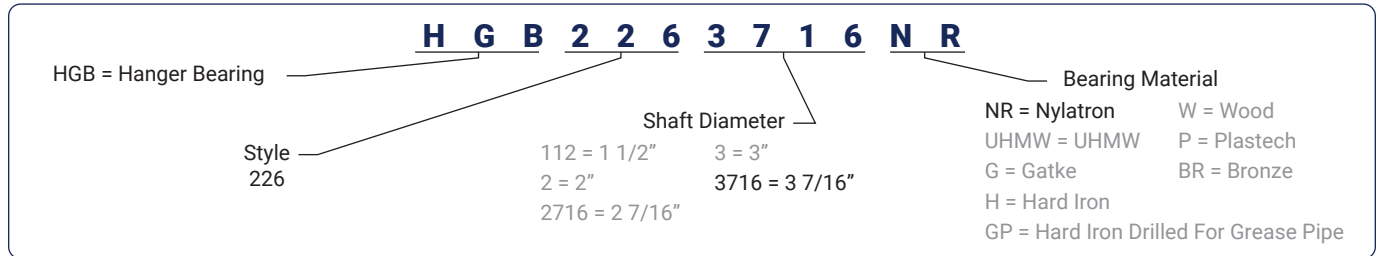
Style 216 Hanger Bearings provide intermediate support when multiple screw sections are used in a screw conveyor. Many different hanger bearing materials are available.

STYLE 216 HANGER BEARINGS			
Material	Stock Part Number	Conveyors, Inc. Part Number	Martin Par Number.
UHMW	HGB216112UHMW	B16112-UHMW	CHB2163U
Gatke	HGB216112G	B16112-G	CHB2163G
Hard Iron	HGB216112H	B16112-H	CHB2163MHI
Hard Iron Drilled For Grease Pipe	HGB216112GP	B16112-H-OP	CHB2163MHI-O
Wood	HGB216112W	B16112-W	CHB2163W
Bronze	HGB216112BR	B16112-BR	CHB2163BR
UHMW	HGB2162UHMW	B162-UHMW	CHB2164U
Gatke	HGB2162G	B162-G	CHB2164G
Hard Iron	HGB2162H	B162-H	CHB2164MHI
Hard Iron Drilled For Grease Pipe	HGB2162GP	B162-H-OP	CHB2164MHI-O
Wood	HGB2162W	B162-W	CHB2164W
Bronze	HGB2162BR	B162-BR	CHB2164BR
UHMW	HGB2162716UHMW	B162716-UHMW	CHB2165U
Gatke	HGB2162716G	B162716-G	CHB2165G
Hard Iron	HGB2162716H	B162716-H	CHB2165MHI
Hard Iron Drilled For Grease Pipe	HGB2162716GP	B162716-H-OP	CHB2165MHI-O
Wood	HGB2162716W	B162716-W	CHB2165W
Bronze	HGB2162716BR	B162716-BR	CHB2165BR

STYLE 216 HANGER BEARINGS			
Material	Stock Part Number	Conveyors, Inc. Part Number	Martin Par Number.
UHMW	HGB2163UHMW	B163-UHMW	CHB2166U
Gatke	HGB2163G	B163-G	CHB2166G
Hard Iron	HGB2163H	B163-H	CHB2166MHI
Hard Iron Drilled For Grease Pipe	HGB2163GP	B163-H-OP	CHB2166MHI-O
Wood	HGB2163W	B163-W	CHB2166W
Bronze	HGB2163BR	B163-BR	CHB2166BR
UHMW	HGB2163716UHMW	B163716-UHMW	CHB2167U
Gatke	HGB2163716G	B163716-G	CHB2167G
Hard Iron	HGB2163716H	B163716-H	CHB2167MHI
Hard Iron Drilled For Grease Pipe	HGB2163716GP	B163716-H-OP	CHB2167H
Wood	HGB2163716W	B163716-W	CHB2167W
Bronze	HGB2163716BR	B163716-BR	CHB2167BR

CARBON STEEL STOCK COMPONENTS

STYLE 226 HANGER BEARINGS



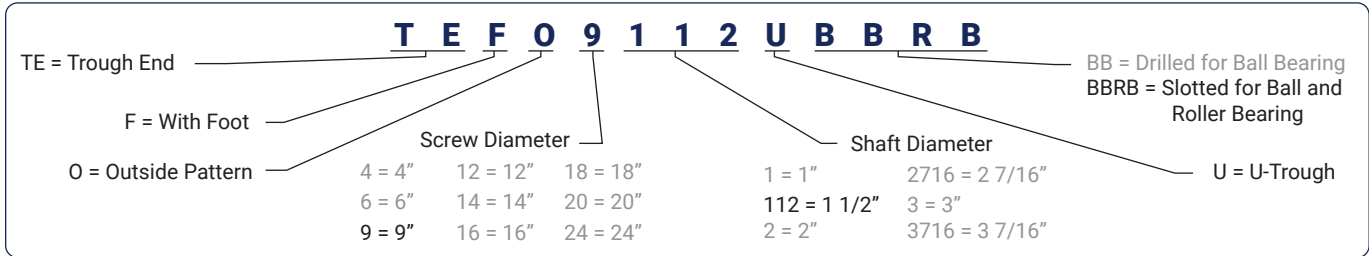
Style 226 Hanger Bearings provide intermediate support when multiple screw sections are used in a screw conveyor. Many different hanger bearing materials are available.

STYLE 226 HANGER BEARINGS			
Material	Stock Part Number	Conveyors, Inc. Part Number	Martin Part No.
Nylatron	HGB226112NR	BX112-N	CHB2203N
UHMW	HGB226112UHMW	BX112-UHMW	CHB2203U
Gatke	HGB226112G	BX112-G	CHB2203G
Hard Iron	HGB226112H	BX112-H	CHB2203MHI
Hard Iron Drilled for Grease Pipe	HGB226112GP	BX112-H-OP	CHB2203MHI-O
Wood	HGB226112W	BX112-W	CHB2203W
Bronze	HGB226112BR	BX112-BR	CHB2203BR
Nylatron	HGB2262NR	BX2-N	CHB2204N
UHMW	HGB2262UHMW	BX2-UHMW	CHB2204U
Gatke	HGB2262G	BX112-G	CHB2204G
Hard Iron	HGB2262H	BX2-H	CHB2204MHI
Hard Iron Drilled for Grease Pipe	HGB2262GP	BX2-H-OP	CHB2204MHI-O
Wood	HGB2262W	BX2-W	CHB2204W
Bronze	HGB2262BR	BX2-BR	CHB2204BR
Nylatron	HGB2262716NR	BX2716-N	CHB2205N
UHMW	HG-B2262716UHMW	BX2716-UHMW	CHB2205U
Gatke	HGB2262716G	BX2716-G	CHB2205G
Hard Iron	HGB2262716H	BX2716-H	CHB2205MHI
Hard Iron Drilled for Grease Pipe	HGB2262716GP	BX2716-H-OP	CHB2205MHI-O
Wood	HGB2262716W	BX2716-W	CHB2205W
Bronze	HGB2262716BR	BX2716-BR	CHB2205BR

STYLE 226 HANGER BEARINGS			
Material	Stock Part Number	Conveyors, Inc. Part Number	Martin Part No.
Nylatron	HGB2263NR	BX3-N	CHB2206N
UHMW	HGB2263UHMW	BX3-UHMW	CHB2206U
Gatke	HGB2263G	BX3-G	CHB2206G
Hard Iron	HGB2263H	BX3-H	CHB2206MHI
Hard Iron Drilled for Grease Pipe	HGB2263GP	BX3-H-OP	CHB2206MHI-O
Wood	HGB2263W	BX3-W	CHB2206W
Bronze	HGB2263BR	BX3-BR	CHB2206BR
Nylatron	HGB2263716NR	BX3716-N	CHB2207N
UHMW	HG-B2263716UHMW	BX3716-UHMW	CHB2207U
Gatke	HGB2263716G	BX3716-G	CHB2207G
Hard Iron	HGB2263716H	BX3716-H	CHB2207MHI
Hard Iron Drilled for Grease Pipe	HGB2263716GP	BX3716-H-OP	CHB2207MHI-O
Wood	HGB2263716W	BX3716-W	CHB2207W
Bronze	HGB2263716BR	BX3716-BR	CHB2207BR

CARBON STEEL STOCK COMPONENTS

TROUGH ENDS (WITH FOOT)



Trough Ends are manufactured from heavy steel plate. All assembly and mounting holes are precision cut to ensure correct alignment with trough flanges.

TROUGH ENDS (WITH FOOT)		
Stock Part Number	Conveyors, Inc. Part Number	Martin Part Number
TEFO41UBB	TEF41-P	4TEF2
TEFO6112UBBRB	TEF6112-P	6TEF3
TEFO9112UBBRB	TEF9112-P	9TEF3
TEFO92UBB	TEF92-P	9TEF4
TEFO122UBB	TEF122-P	12TEF4
TEFO122716UBBRB	TEF122716-P	12TEF5
TEFO123UBBRB	TEF123-P	12TEF6
TEFO142716UBBRB	TEF142716-P	14TEF5
TEFO143UBBRB	TEF143-P	14TEF6
TEFO163UBBRB	TEF163-P	16TEF6
TEFO183UBBRB	TEF183-P	18TEF6
TEFO183716UBBRB	TEF183716-P	18TEF7
TEFO203UBBRB	TEF203-P	20TEF6
TEFO203716UBBRB	TEF203716-P	20TEF7
TEFO243716UBBRB	TEF243716-P	24TEF7

PLATE SEALS

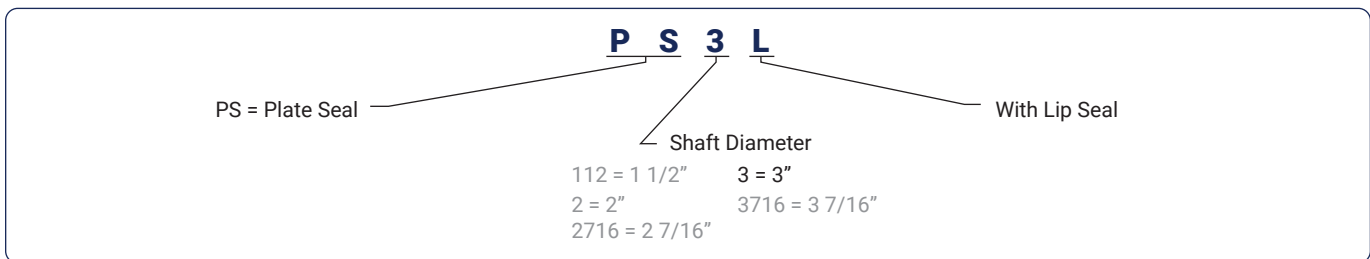
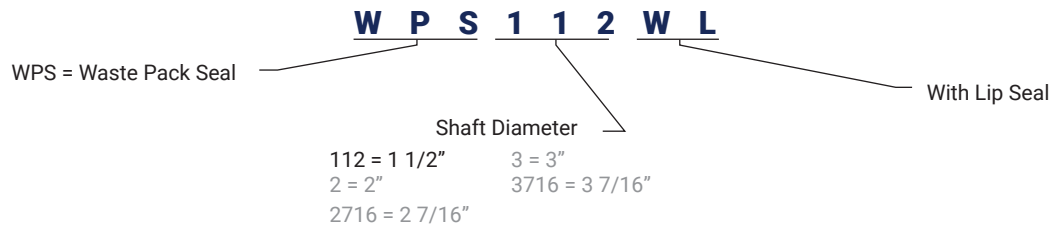


Plate Seals are manufactured from steel plate and machined to very close tolerances. Utilizing a neoprene lip seal, plate seals are a very economical and effective shaft seal for light and medium-duty applications. Plate seals are zinc plated for corrosion resistance.

PLATE SEALS		
Stock Part Number	Conveyors, Inc. Part Number	Martin Part Number
PS112L	SP112-L	CSP3
PS2L	SP2-L	CSP4
PS2716L	SP2716-L	CSP5
PS3L	SP3-L	CSP6
PS3716L	SP3716-L	CSP7

CARBON STEEL STOCK COMPONENTS

WASTE PACK SEALS

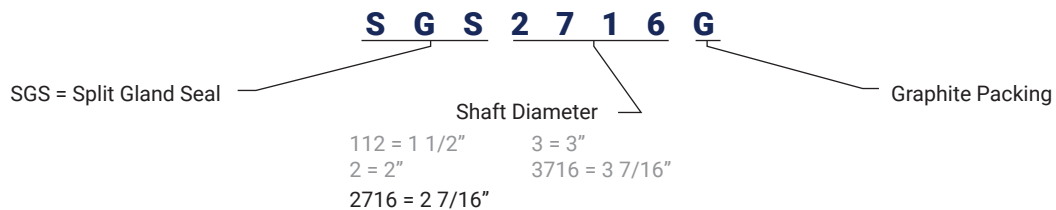


WASTE PACK SEALS		
Stock Part Number	Conveyors, Inc. Part Number	Martin Part Number
WPS112WL	SW112-L	CSW3
WPS2WL	SW2-L	CSW4
WPS2716WL	SW2716-L	CSW5
WPS3WL	SW3-L	CSW6
WPS3716WL	SW3716-L	CSW7



Waste Pack Seals are cast from steel and machined to very close tolerances. All KWS waste pack seals come standard with a lip seal for extra shaft sealing. Waste pack seals are the most common seal for light to medium-duty applications. Waste pack seals are zinc plated for corrosion resistance.

SPLIT GLAND SEALS



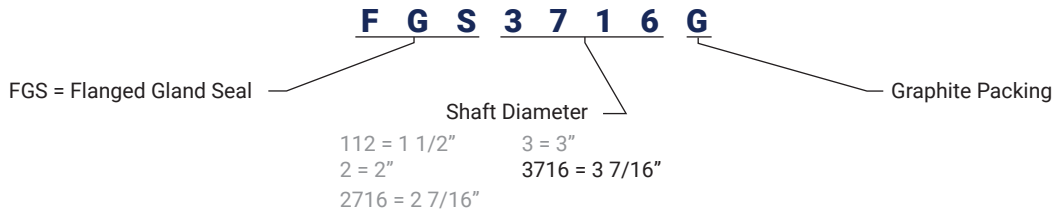
SPLIT GLAND SEALS		
Stock Part Number	Conveyors, Inc. Part Number	Martin Part Number
SGS112G	SS112	CSS3
SGS2G	SS2	CSS4
SGS2716G	SS2716	CSS5
SGS3G	SS3	CSS6
SGS3716G	SS3716	CSS7



Split Gland Seals are cast from steel and machined to very close tolerances. Split gland seals are adjustable with seal packing that is inexpensive and easily replaced. Split gland seals are zinc plated for corrosion resistance.

CARBON STEEL STOCK COMPONENTS

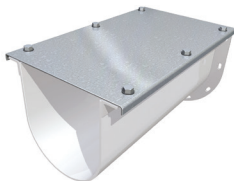
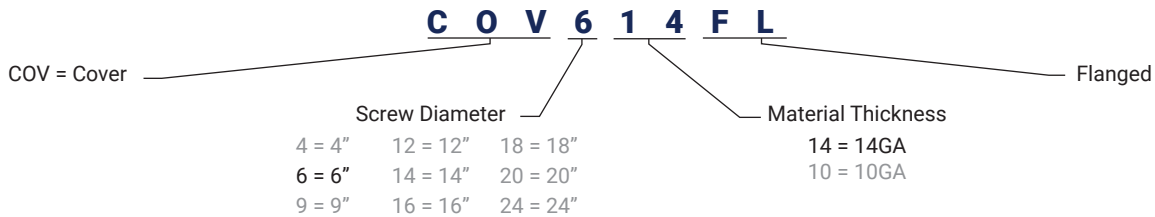
FLANGED GLAND SEALS



Flanged Gland Seals are manufactured and machined to very close tolerances. Three rings of seal packing provide maximum shaft sealing. This seal is designed for pressure or vacuum service. Flanged gland seals are zinc plated for corrosion resistance.

FLANGED GLAND SEALS		
Stock Part Number	Conveyors, Inc. Part Number	Martin Part Number
FGS112G	SG112	PGC3
FGS2G	SG2	PGC4
FGS2716G	SG2716	PGC5
FGS3G	SG3	PGC6
FGS3716G	SG3716	PGC7

U-TROUGH COVERS

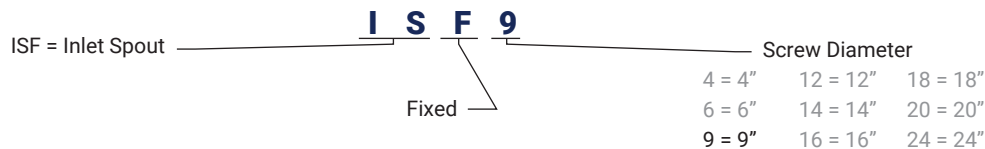


U-Trough Covers are sheared and formed from gauge steel to fit over angle and formed flange troughs. U-trough covers provide personnel protection and contain bulk materials being conveyed. Bolts or screw clamps are typically used to fasten covers to u-troughs.

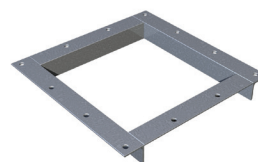
U-TROUGH COVERS		
Stock Part Number	Conveyors, Inc. Part Number	Martin Part Number
COV414UFL	TC414-F	4TCF14-10
COV614UFL	TC614-F	6TCF14-10
COV914UFL	TC914-F	9TCF14-10
COV1214UFL	TC1214-F	12TCF14-12
COV1414UFL	TC1414-F	14TCF14-12
COV1614UFL	TC1614-F	16TCF14-12
COV1810UFL	TC1810-F	18TCF10-12
COV2010UFL	TC2010-F	20TCF10-12
COV2410UFL	TC2410-F	24TCF10-12

CARBON STEEL STOCK COMPONENTS

INLET SPOUTS

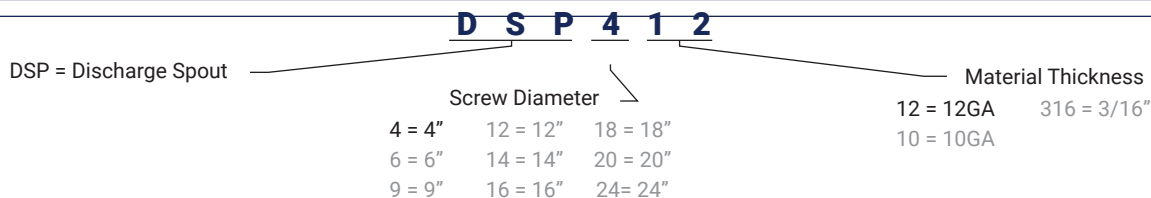


INLET SPOUTS		
Stock Part Number	Conveyors, Inc. Part No.	Martin Part Number
ISF4	FCI4	4CIF
ISF6	FCI6	6CIF
ISF9	FCI9	9CIF
ISF12	FCI12	12CIF
ISF14	FCI14	14CIF
ISF16	FCI16	16CIF
ISF18	FCI18	18CIF
ISF20	FCI20	20CIF
ISF24	FCI24	24CIF

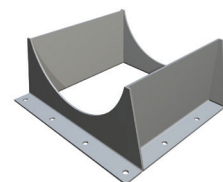


Inlet Spouts are precision cut and jig welded to provide an exact fit to trough covers. Inlet spouts allow the entrance of bulk materials into a screw conveyor.

U-TROUGH DISCHARGE SPOUTS



U-TROUGH DISCHARGE SPOUTS		
Stock Part Number	Conveyors, Inc. Part No.	Martin Part Number
DSP412	DS412	4TSD12
DSP612	DS612	6TSD12
DSP910	DS910	9TSD10
DSP1210	DS1210	12TSD12
DSP1410	DS1410	14TSD12
DSP16316	DS167	16TSD7
DSP18316	DS187	18TSD7
DSP20316	DS207	20TSD7
DSP24316	DS247	24TSD7



U-Trough Discharge Spouts are precision cut and jig welded to provide an exact fit to both angle and formed flange u-troughs. Discharge spouts allow the exit of bulk materials from a screw conveyor.

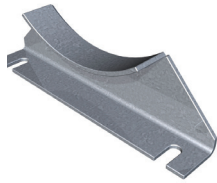
CARBON STEEL STOCK COMPONENTS

TROUGH SADDLES

S A D 1 2

SAD = Saddle

Screw Diameter
 4 = 4" 12 = 12" 18 = 18"
 6 = 6" 14 = 14" 20 = 20"
 9 = 9" 16 = 16" 24 = 24"



Trough Saddles are manufactured from steel plate and provide additional support at any location along the length of a screw conveyor.

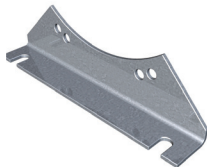
TROUGH SADDLES		
Stock Part Number	Conveyors, Inc. Part No.	Martin Part Number
SAD4	S4	4TS
SAD6	S6	6TS
SAD9	S9	9TS
SAD12	S12	12TS
SAD14	S14	14TS
SAD16	S16	16TS
SAD18	S18	18TS
SAD20	S20	20TS
SAD24	S24	24TS

TROUGH FEET

F T 2 0

FT = Foot

Screw Diameter
 4 = 4" 12 = 12" 18 = 18"
 6 = 6" 14 = 14" 20 = 20"
 9 = 9" 16 = 16" 24 = 24"

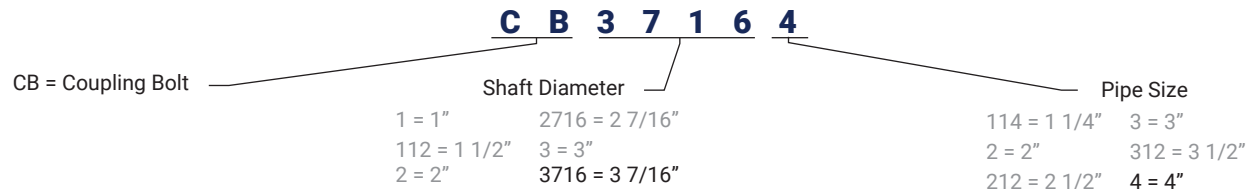


Trough Feet are manufactured from steel plate and provide additional support at any location where two trough sections are bolted together.

Trough Feet		
Stock Part Number	Conveyors, Inc. Part No.	Martin Part Number
FT4	FF4	4TFF
FT6	FF6	6TFF
FT9	FF9	9TFF
FT12	FF12	12TFF
FT14	FF14	14TFF
FT16	FF16	16TFF
FT18	FF18	18TFF
FT20	FF20	20TFF
FT24	FF24	24TFF

CARBON STEEL STOCK COMPONENTS

COUPLING BOLTS (GRADE 5)



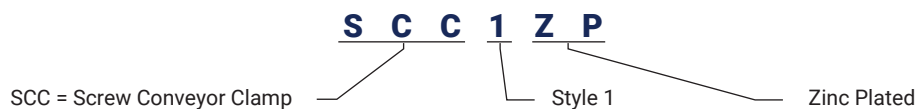
COUPLING BOLTS (GRADE 5 STANDARD)

Stock Part Number	Conveyors, Inc. Part No.	Martin Part Number
CB1114	CB1	CCB2-H
CB1122	CB112	CCB3-H
CB2212	CB2	CCB4-H
CB27163	CB2716	CCB5-H
CB3312	CB3	CCB6-H
CB34	CB3A	CCB6A-H
CB37164	CB3716	CCB7-H



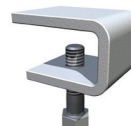
Coupling Bolts are stocked standard in high-strength Grade 5 construction and used to couple screw sections together with drive, coupling and end shafts. Coupling bolt diameter and length is unique to screw size.

SCREW CLAMPS



SCREW CLAMPS

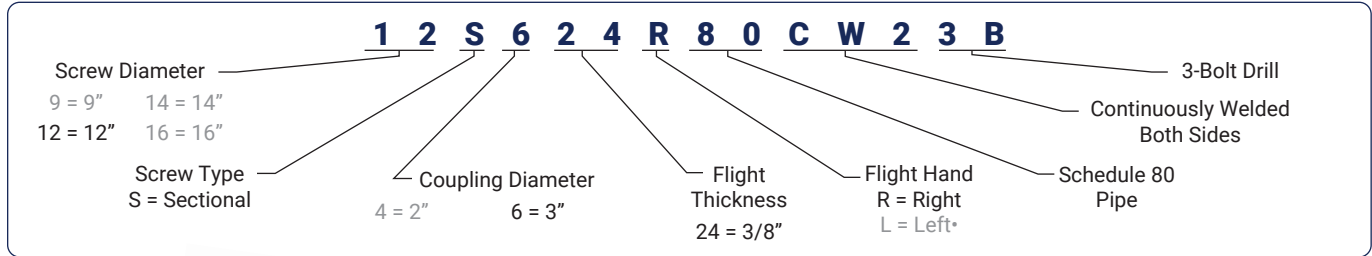
Stock Part Number	Conveyors, Inc. Part No.	Martin Part Number
SCC1ZP	SC-C1	CSC-2-Z



Screw Clamps are manufactured from zinc-plated steel and are a simple, inexpensive method for fastening trough covers to troughs. A tool is required to remove screw clamps.

STOCK COMPONENTS FOR THE RENDERING INDUSTRY

RENDERING SCREWS

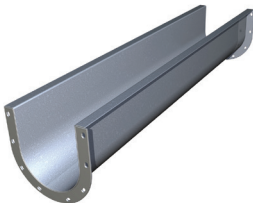
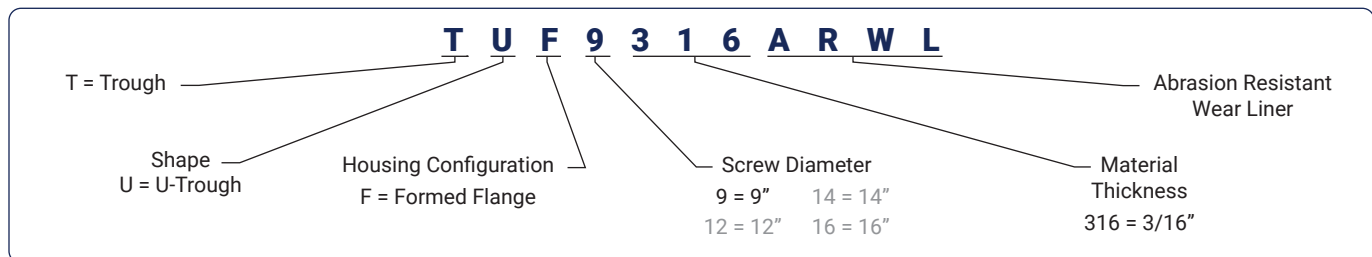


Rendering Screws have 3/8-inch thick sectional flights continuously welded on both sides to schedule 80 pipe. 3-bolt drilling is included on both ends.

RENDERING SCREWS		
Stock Part Number	Conveyors, Inc. Part Number	Martin Part Number
9S424R80CW23B	MADE TO ORDER	N/A
12S624R80CW23B	MADE TO ORDER	N/A
14S624R80CW23B	MADE TO ORDER	N/A
16S624R80CW23B	MADE TO ORDER	N/A

*Note: All screws are full pitch. *Left hand flights are non-stock*

RENDERING U-TROUGHS

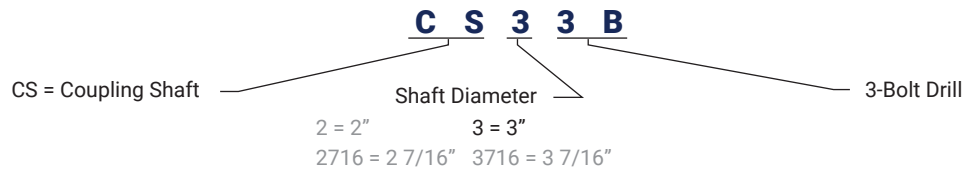


RENDERING U-TROUGHS		
Stock Part Number	Conveyors, Inc. Part Number	Martin Part Number
TUF9316ARWL	MADE TO ORDER	N/A
TUF12316ARWL	MADE TO ORDER	N/A
TUF14316ARWL	MADE TO ORDER	N/A
TUF16316ARWL	MADE TO ORDER	N/A

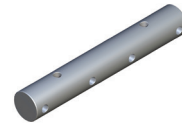
Rendering U-Troughs are 3/16-inch thick formed flange troughs with 1/4-inch thick AR-235 wear liners. The wear liners are stitch welded to the troughs for easy removal and replacement.

STOCK COMPONENTS FOR THE RENDERING INDUSTRY

3-BOLT COUPLING SHAFTS

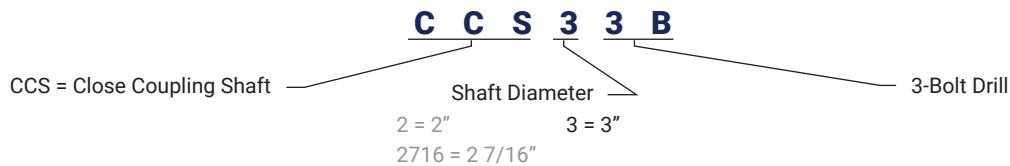


3-BOLT COUPLING SHAFTS		
Stock Part Number	Conveyors, Inc. Part Number	Martin Part Number
CS23B	MADE TO ORDER	N/A
CS27163B	MADE TO ORDER	N/A
CS33B	MADE TO ORDER	N/A
CS37163B	MADE TO ORDER	N/A

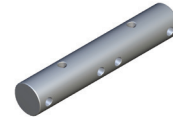


3-Bolt Coupling Shafts are precision cut and drilled to provide an exact fit with Rendering screws. A space is provided between the screw sections for a hanger and hanger bearing to support additional screw sections.

3-BOLT CLOSE COUPLING SHAFTS

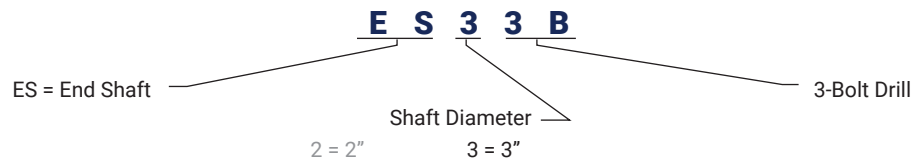


3-BOLT CLOSE COUPLING SHAFTS		
Stock Part Number	Conveyors, Inc. Part Number	Martin Part Number
CCS23B	MADE TO ORDER	N/A
CCS27163B	MADE TO ORDER	N/A
CCS33B	MADE TO ORDER	N/A

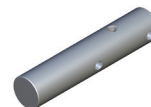


3-Bolt Close Coupling Shafts are precision cut and drilled to provide an exact fit with Rendering screws. Screw sections can be butted together to form a continuous helix.

3-BOLT END SHAFTS



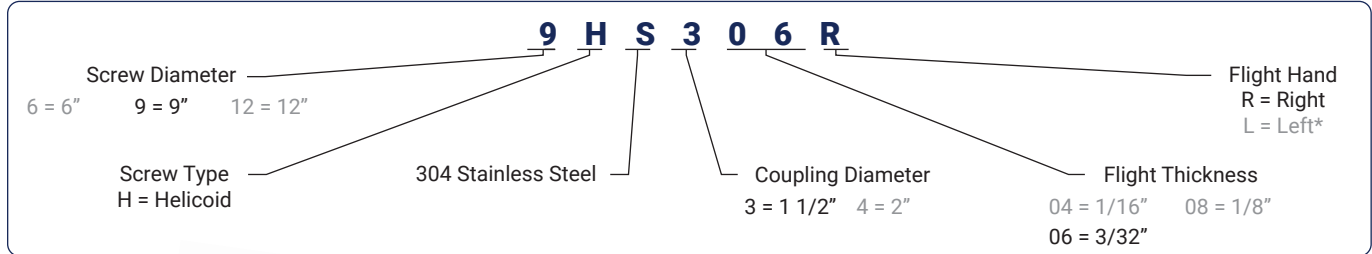
3-BOLT END SHAFTS		
Stock Part Number	Conveyors, Inc. Part Number	Martin Part Number
ES23B	MADE TO ORDER	N/A
ES33B	MADE TO ORDER	N/A



3-Bolt End Shafts are precision cut and drilled to provide an exact fit with Rendering screws. End shafts are designed to accommodate a variety of shaft seal and flange bearing arrangements.

304 STAINLESS STEEL STOCK COMPONENTS

304 SS HELICOID SCREWS

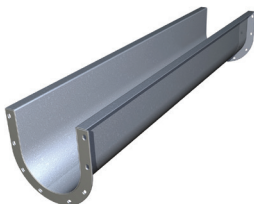
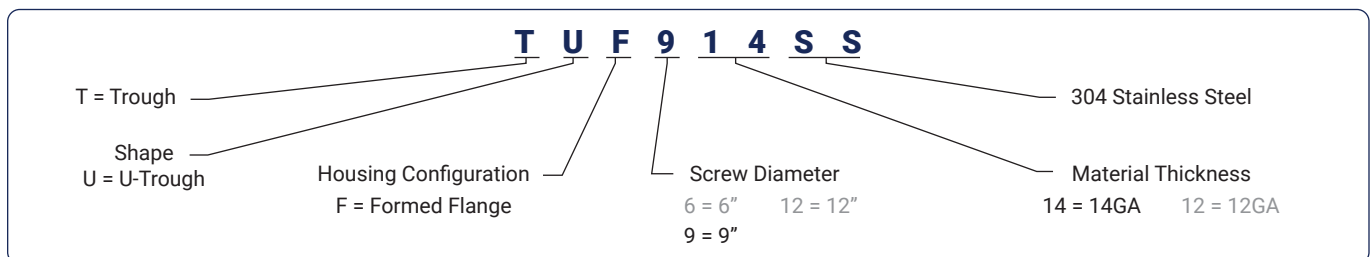


304 SS Helicoid Screws are manufactured by mounting helicoid flighting on a center pipe and fastening by intermittent welds. Internal collars are inserted in each end and plug welded to accommodate shafts. Screws are structurally reinforced at the ends by end lugs.

304 SS HELICOID SCREWS		
Stock Part Number	Conveyors, Inc. Part Number	Martin Part Number
6HS304R	MADE TO ORDER	6H304-R-SS
9HS306R	MADE TO ORDER	9H306R-SS
9HS406R	MADE TO ORDER	9HS406R
12HS408R	MADE TO ORDER	12H408-R-SS

*Note: All screws are full pitch. *Left hand flights are non-stock.*

304 SS FORMED FLANGE U-TROUGHS

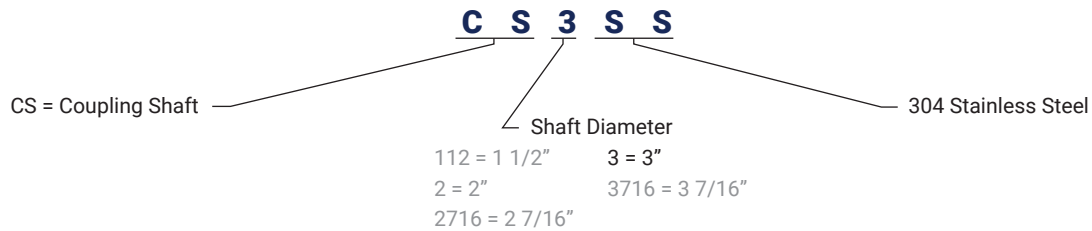


304 SS FORMED FLANGE U-TROUGHS		
Stock Part Number	Conveyors, Inc. Part Number	Martin Part Number
TUF614SS	MADE TO ORDER	6CTF14-10-SS
TUF914SS	MADE TO ORDER	9CTF14-10-SS
TUF1212SS	MADE TO ORDER	12CTF12-12-SS

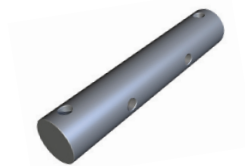
304 SS Formed Flange U-Troughs are manufactured with formed top flanges. End flanges are jig-welded to ensure proper alignment with other trough sections. Formed flange troughs are very cost-effective and dust-tight.

304 STAINLESS STEEL STOCK COMPONENTS

304 SS 2-BOLT COUPLING SHAFTS

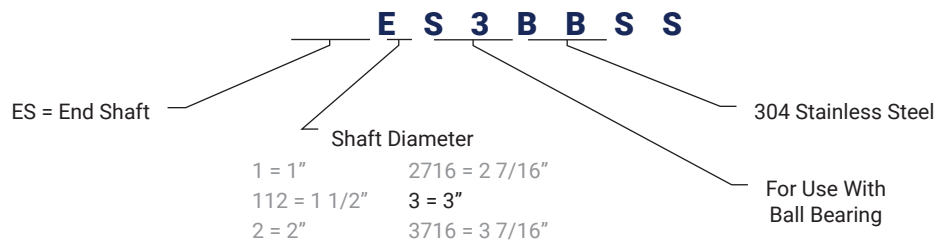


304 SS COUPLING SHAFTS		
Stock Part Number	Conveyors, Inc. Part Number	Martin Part Number
CS112SS	MADE TO ORDER	CC3-SS
CS2SS	MADE TO ORDER	CC4-SS
CS2716SS	MADE TO ORDER	CC5-SS
CS3SS	MADE TO ORDER	CC6-SS
CS3716SS	MADE TO ORDER	CC7-SS

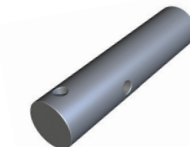


304 SS Coupling Shafts are precision cut and drilled to provide an exact fit with helicoid and sectional screws. A space is provided between the screw sections for a hanger and hanger bearing to support additional screw sections.

304 SS 2-BOLT END SHAFTS



304 SS END SHAFTS		
Stock Part Number	Conveyors, Inc. Part Number	Martin Part Number
ES1BBSS	MADE TO ORDER	CE2BB-W-SS
ES112BBSS	MADE TO ORDER	CE3BB-W-SS
ES2BBSS	MADE TO ORDER	CE4BB-W-SS
ES2716BBSS	MADE TO ORDER	CE5BB-W-SS
ES3BBSS	MADE TO ORDER	CE6BB-W-SS
ES3716BBSS	MADE TO ORDER	CE7BB-W-SS



304 SS End Shafts are precision cut and drilled to provide an exact fit with helicoid and sectional screws. End shafts are designed to accommodate a variety of shaft seal and flange bearing arrangements.

304 STAINLESS STEEL STOCK COMPONENTS

304 SS STYLE 226 HANGERS FOR U-TROUGHS

H G R 6 2 2 6 1 1 2 L S S

HGR = Hanger

Screw Diameter

6 = 6" 14 = 14" 20 = 20"
 9 = 9" 16 = 16" 24 = 24"
 12 = 12" 18 = 18"

Style 226

Shaft Diameter

112 = 1 1/2" 3 = 3"
 2 = 2" 3716 = 3 7/16"
 2716 = 2 7/16"

304 Stainless Steel

Less Bearing



304 SS Style 226 Hangers are precision formed from heavy bar stock and are the most common style of hanger. Bulk material flow is maximized by single leg design. Style 226 hangers are excellent for normal and heavy-duty applications.

304 SS STYLE 226 HANGERS		
Stock Part Number	Conveyors, Inc. Part No.	Martin Part Number
HGR6226112LSS	MADE TO ORDER	6CH2263-SS
HGR9226112LSS	MADE TO ORDER	9CH2263-SS
HGR92262LSS	MADE TO ORDER	9CH2264-SS
HGR122262LSS	MADE TO ORDER	12CH2264-SS
HGR122262716LSS	MADE TO ORDER	12CH2265-SS
HGR122263LSS	MADE TO ORDER	12CH2266-SS
HGR142262716LSS	MADE TO ORDER	14CH2265-SS
HGR142263LSS	MADE TO ORDER	14CH2266-SS
HGR162263LSS	MADE TO ORDER	16CH2266-SS
HGR182263LSS	MADE TO ORDER	18CH2266-SS
HGR182263716LSS	MADE TO ORDER	18CH2267-SS
HGR202263LSS	MADE TO ORDER	20CH2266-SS
HGR202263716LSS	MADE TO ORDER	20CH2267-SS
HGR242263716LSS	MADE TO ORDER	24CH2267-SS

304 SS U-TROUGH COVERS

C O V 6 1 4 F L S S

COV = Cover

Screw Diameter

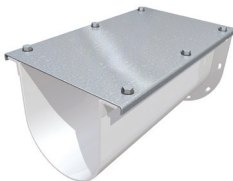
6 = 6"
 9 = 9"
 12 = 12"

Material Thickness

14 = 14GA

304 Stainless Steel

Flanged



304 SS U-Trough Covers are sheared and formed from gauge steel to fit over angle and formed flange u-troughs. U-trough covers provide personnel protection and contain bulk materials being conveyed. Bolts or screw clamps are typically used to fasten covers to u-troughs.

304 SS U-TROUGH COVERS		
Stock Part Number	Conveyors, Inc. Part No.	Martin Part Number
COV614UFLSS	MADE TO ORDER	6TCF14-10-SS
COV914UFLSS	MADE TO ORDER	9TCF14-10-SS
COV1214UFLSS	MADE TO ORDER	12TCF14-12-SS

304 STAINLESS STEEL STOCK COMPONENTS

304 SS U-TROUGH DISCHARGE SPOUTS

DSP = Discharge Spout

D S P 6 1 4 U P S S

Screw Diameter
6 = 6"
9 = 9"
12 = 12"

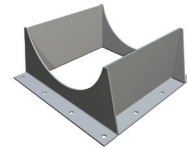
Material Thickness
14 = 14GA 12 = 12GA

U = U-Trough

P = Plain

304 Stainless Steel

304 SS U-TROUGH DISCHARGE SPOUTS		
Stock Part Number	Conveyors, Inc. Part No.	Martin Part Number
DSP614UPSS	MADE TO ORDER	6TSD14-SS
DSP914UPSS	MADE TO ORDER	9TSD14-SS
DSP1212UPSS	MADE TO ORDER	12TSD12-SS



304 SS U-Trough Discharge Spouts are precision cut and jig welded to provide an exact fit to both angle and formed flange u-troughs. Discharge spouts allow the exit of bulk materials from a screw conveyor.

304 SS COUPLING BOLTS

CB = Coupling Bolt

C B 2 7 1 6 3 1 8 8 S S

Shaft Diameter
1 = 1" 2716 = 2 7/16"
112 = 1 1/2" 3 = 3"
2 = 2" 3716 = 3 7/16"

Pipe Size
114 = 1 1/4" 3 = 3"
2 = 2" 312 = 3 1/2"
212 = 2 1/2" 4 = 4"

18-8 Stainless Steel

304 SS COUPLING BOLTS		
Stock Part Number	Conveyors, Inc. Part No.	Martin Part Number
CB1114188SS	MADE TO ORDER	CCB2-SS
CB1122188SS	MADE TO ORDER	CCB3-SS
CB2212188SS	MADE TO ORDER	CCB4-SS
CB27163188SS	MADE TO ORDER	CCB5-SS
CB3312188SS	MADE TO ORDER	CCB6-SS
CB34188SS	MADE TO ORDER	CCB6A-SS
CB37164188SS	MADE TO ORDER	CCB7-SS



304 SS Coupling Bolts are used to couple screw sections together with drive, coupling and end shafts. Coupling bolt diameter and length is unique to screw size.

304 SS SCREW CLAMPS

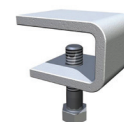
SCC = Screw Conveyor Clamp

S C C 1 S S

Style 1

304 Stainless Steel

304 SS SCREW CLAMP PART NUMBER		
Stock Part Number	Conveyors, Inc. Part No.	Martin Part Number
SCC1SS	MADE TO ORDER	CSC-2-SS



304 SS Screw Clamps are a simple, inexpensive method for fastening trough covers to troughs. A tool is required to remove screw clamps.



Design
Engineering
Manufacturing



ISO 9001
Certified



MADE IN THE USA

3041 Conveyor Drive | Burleson, TX 76028
Toll-free: (800) 543-6558 | Local Phone: (817) 295-2240 | Fax: (817) 447-8528
Inquiries: sales@kwsmfg.com | www.kwsmfg.com