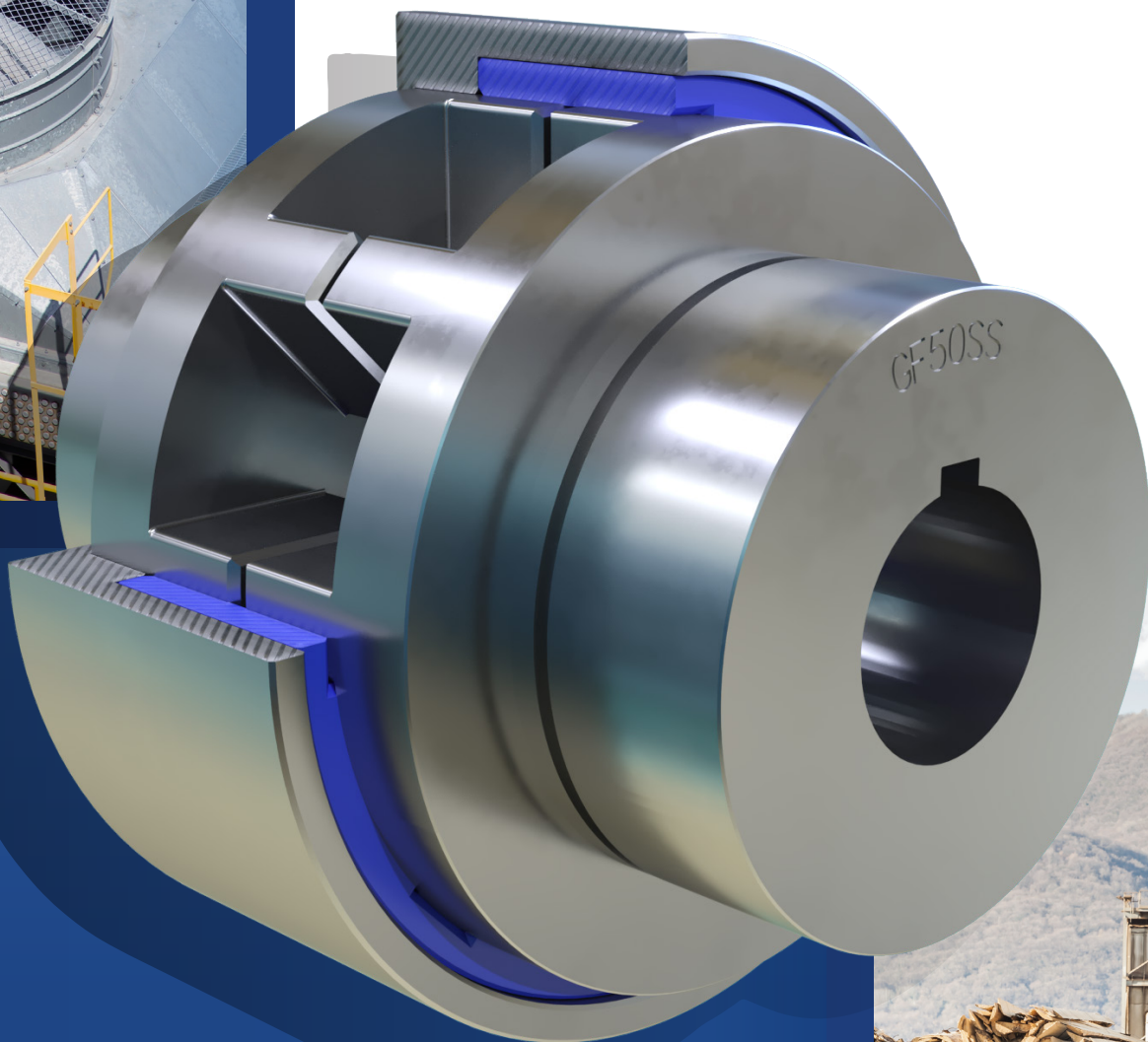


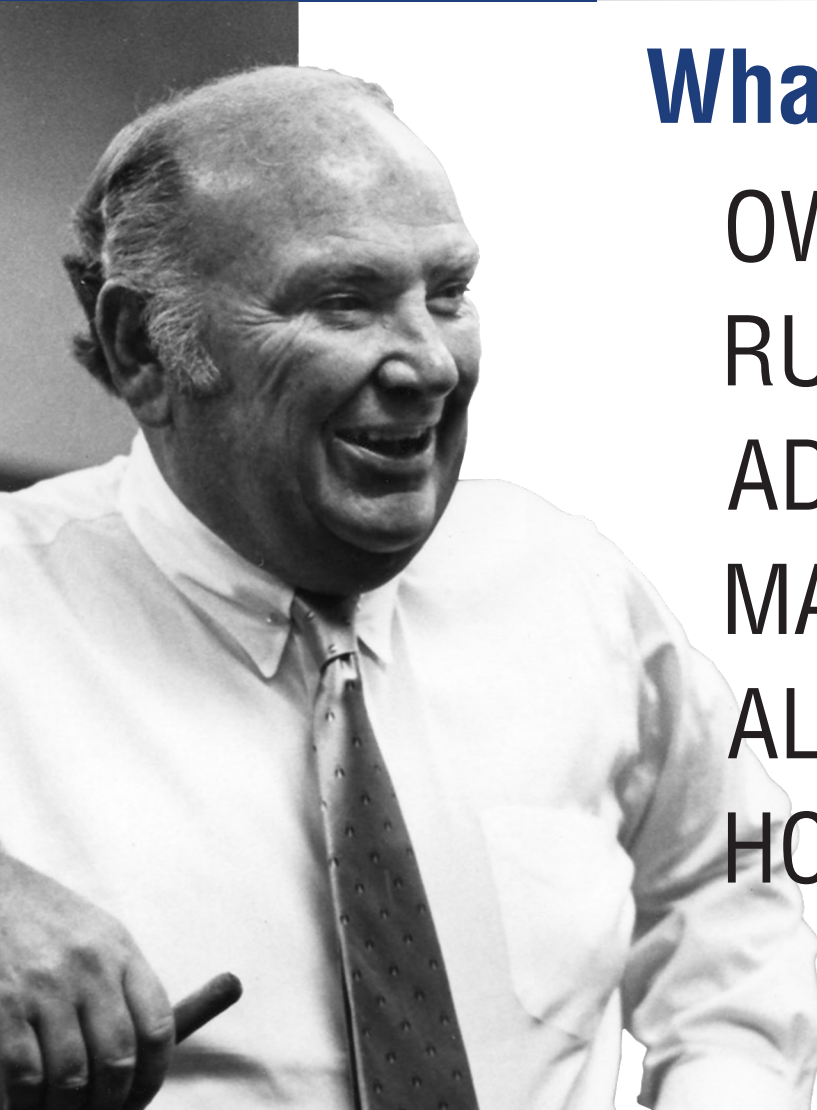


Martin Couplings



BLUE-FLEX®, GO-FLEX®, QUADRA-FLEX®, MARTIN-FLEX®,
ROLLER CHAIN AND JAW COUPLINGS





What would Joe do?

OWN your own territory and
take care of our customers

RUN your facility and take
care of our people

ADD something to
the ballgame

MAKE SURE you have your
priorities right

ALWAYS back to the basics – quality,
service, low-cost producer

HOW to get big and
stay small

A handwritten signature in blue ink that reads "Joe Martin". The signature is stylized and fluid.

Established in 1951 in Arlington, Texas, Martin has evolved into a global powerhouse with 30+ strategically located sites. Our unwavering commitment to excellence in power transmission and material handling positions us as a trusted partner globally. At Martin, we offer more than products; we provide precision, personalized service, combining global capability with local care. Experience the Martin difference, where our dedication to quality sets us apart.

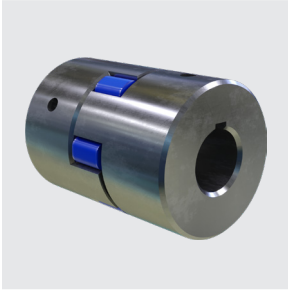
Success in Business, Martin's Philosophy:

Success at Martin requires a strategic mindset — knowing customers, taking ownership, building trust, and cultivating an owner's mentality. Effective leadership involves personal responsibility, positive work culture, visibility, and effective communication. Unlocking success demands creativity, innovation, and resisting the status quo. Aligning priorities with a greater purpose ensures contributions lead to organizational success. Martin emphasizes basics — quality, service, and low-cost production — for streamlined and maximized efforts.

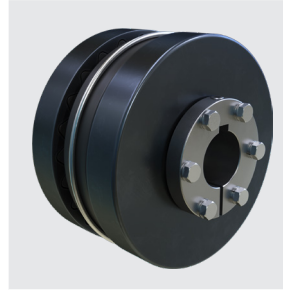
"Get Big, Stay Small" Strategy:

Martin advises strategic business expansion, discovering scalable avenues while preserving core qualities. Maintaining agility and adaptability in the dynamic market landscape is crucial. In a world full of choices, Martin's commitment to prioritizing personalized service and connections with customers sets us apart from the competition.

AVAILABLE IN STOCK

**JAW**

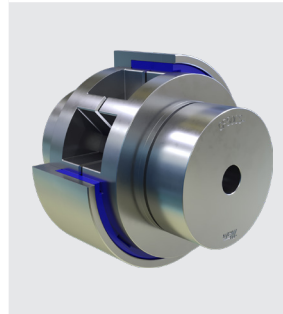
- 13 coupling sizes
- Torque capacity up to 4,716 in-lb
- Max. bore capacity 2 7/8"
- Max. angular misalignment 1°
- Non-lubricated

**QUADRA-FLEX®**

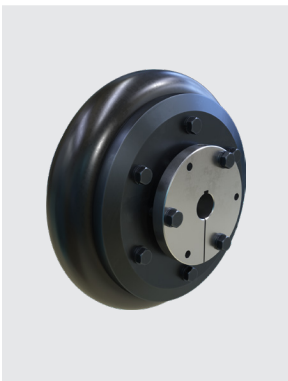
- 13 coupling sizes
- Torque capacity up to 47,250 in-lb
- Max. bore capacity 6"
- Max. angular misalignment 2°
- Non-lubricated

**BLUE-FLEX®**

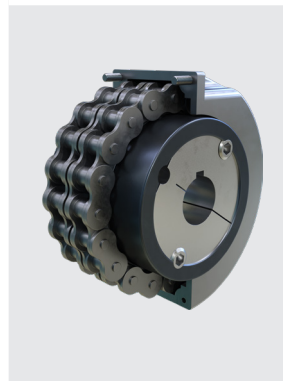
- 19 coupling sizes
- Torque capacity up to 1,650,000 in-lb
- Max. bore capacity 13"
- Max. angular misalignment 0.25°
- Lubricated

**GO-FLEX®**

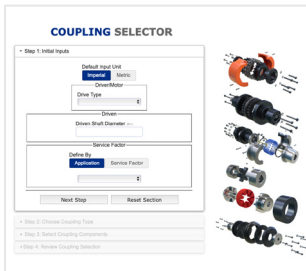
- 12 coupling sizes
- Torque capacity up to 1,680,000 in-lb
- Max. bore capacity 11"
- Max. angular misalignment 2°
- Non-lubricated

**MARTIN-FLEX®**

- 8 coupling sizes
- Torque capacity up to 9,076 in-lb
- Max. bore capacity 3-1/2"
- Max. angular misalignment 4°
- Max. parallel misalignment 1/8"
- Axial misalignment 5/16"
- Non-lubricated

**CHAIN**

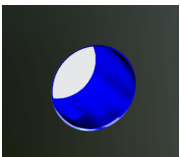
- 13 coupling sizes
- Torque capacity up to 105,882 in-lb
- Max. bore capacity 6 1/8"
- Lubricated

**ONLINE SHEAVE DRIVE SELECTOR TOOL**

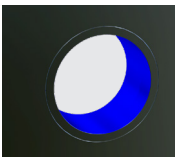
The Coupling Selector online tool simplifies the process of finding the right product for you. Simply input your drive specifications, and we'll guide you to the perfect selection. Visit martinsprocket.com or scan the QR code to explore this and other drive selector tools available.



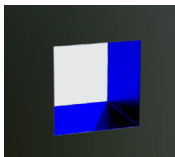
AVAILABLE CUSTOM BORE OPTIONS



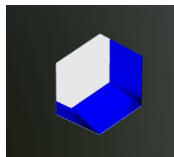
Finished



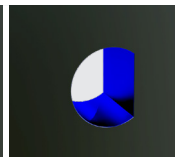
Sleeved



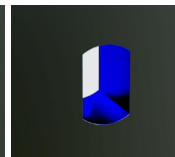
Square



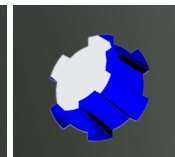
Hex



D



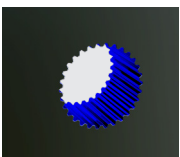
Double D



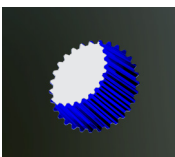
Parallel Spline



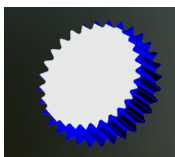
Bearing



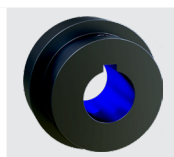
Spline



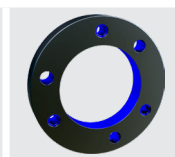
Involute Spline



Serration Spline



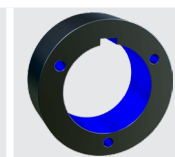
Keyway and Setscrew



QD



Taper



MST®



Assembly

MADE-TO-ORDER

SPECIALITY

- Special bores
- Shear pin assembly
- Custom spacer design
- Split clam sytle hub
- Break disc
- And more...

MATERIALS AND FINISHES

HUBS AND FLANGES

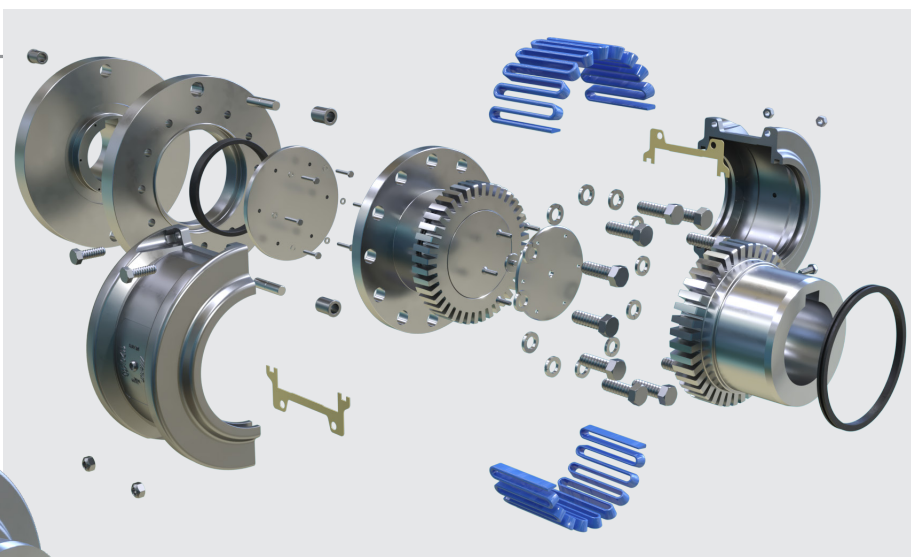
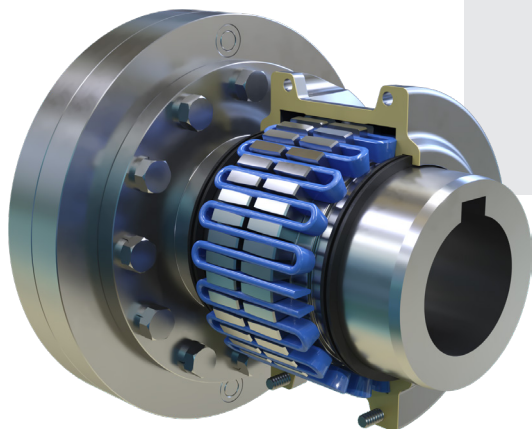
- Cast Iron
- Carbon steel
- Stainless steel
- Sintered metal
- Aluminum
- Nickel
- Zinc
- Cadmium
- Chrome

INSERTS

- Urethane
- Buna-N
- Hytrel®
- Bronze
- Metal detectable
- FDA compliant

SHEAR PIN

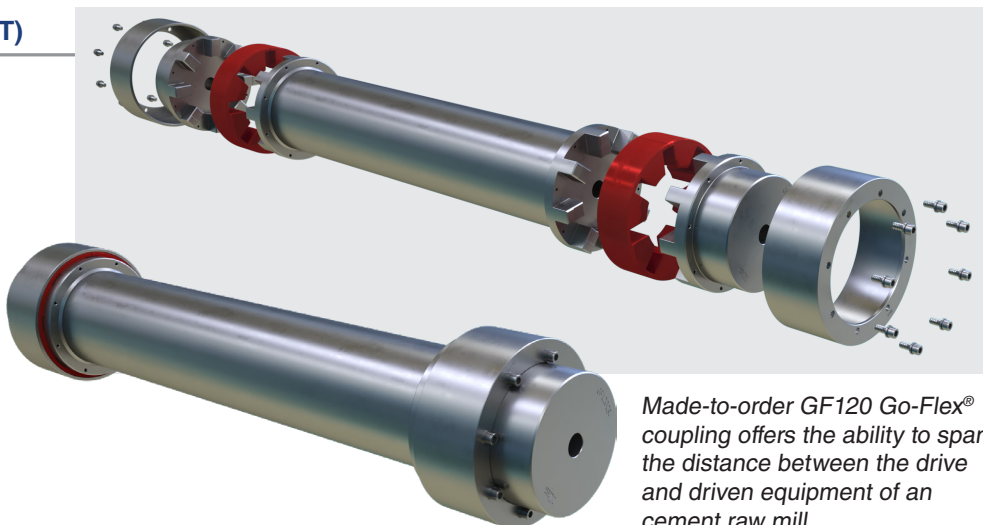
Shear pin is a mechanical fastener acting as a safety device that breaks or shears under specific loads or excessive torque to protect components from jammed or overloaded conditions. These are used in gearboxes, motors, or drivetrain assemblies such as conveyor systems, mixers, or crushers.



*Made-to-order
1120T Blue-Flex® grid coupling
which offers shear pin
protection to the driving and
driven equipment.*

SPACER DESIGN (API DROPOUT)

Spacer designs (API dropout) connect the driver and driven shafts, spanning the gap between them in various applications including pumps. They allow for easy maintenance as the spacer can be removed for additional access to the pump.



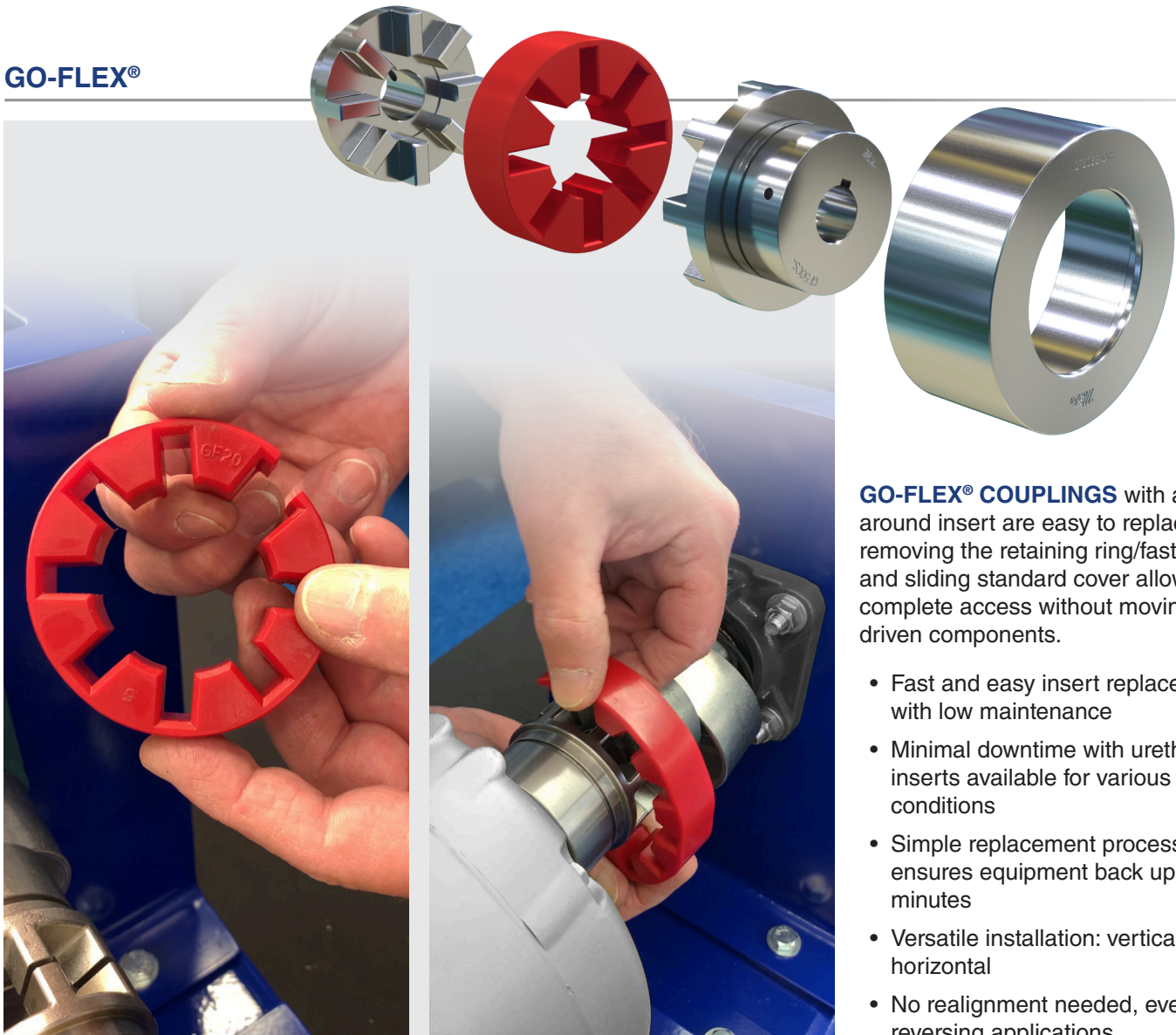
*Made-to-order GF120 Go-Flex®
coupling offers the ability to span
the distance between the drive
and driven equipment of an
cement raw mill.*

ELASTOMERIC COUPLINGS

Elastomeric couplings transfer torque between shafts using flexible insert made of elastomer materials that compensate for misalignment and dampen vibrations. Elastomeric couplings are versatile and reliable, making them suitable for various applications across different industries. They are commonly used in industrial machines like pumps, compressors, conveyors, mixers, as well as HVAC systems and renewable energy applications like wind turbines and solar systems.

- **MISALIGNMENT COMPENSATION** through adaptable accommodation for angular, parallel, and axial misalignments, leading to reduced strain on connected equipment.
- **SHOCK ABSORPTION** offers excellent protection to the connected machinery from sudden shocks and impacts.
- **VIBRATION REDUCTION** by dampening vibrations generated during operation, elastomeric couplings enhance system reliability, reduce wear and tear, and minimize maintenance requirements.
- **ENERGY EFFICIENCY** by reducing energy losses caused by misalignment or vibrations, improving overall efficiency.
- **EASY INSTALLATION AND MAINTENANCE** provided by design for simple and quick installation, and requires minimal maintenance.

GO-FLEX®



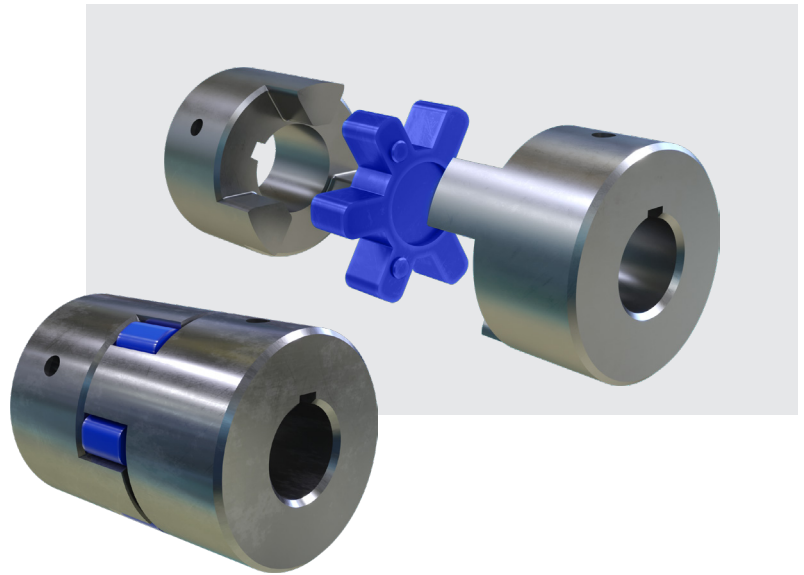
GO-FLEX® COUPLINGS with a wrap around insert are easy to replace, removing the retaining ring/fastener and sliding standard cover allows for complete access without moving other driven components.

- Fast and easy insert replacement with low maintenance
- Minimal downtime with urethane inserts available for various conditions
- Simple replacement process ensures equipment back up in minutes
- Versatile installation: vertical or horizontal
- No realignment needed, even in reversing applications

JAW COUPLING

JAW COUPLINGS are Martin's versatile coupling solutions, available in two styles: Martin Universal (ML) for higher horsepower applications and Martin Super (MS) for complete interchangeability.

- No lubrication required for easy installation and minimal maintenance
- No metal-to-metal contact, enhancing resistance to oil, dirt, sand, moisture, and grease for extended longevity
- Facilitated easy inspection of the load-carrying spider
- Flexibility to accommodate angular or parallel misalignment of shafts with the buna-n spider member ensures smooth power transmission



QUADRA-FLEX® COUPLING

QUADRA-FLEX COUPLINGS are Martin's solution for non-lubricated, maintenance-free power transmission with easy and quick installation. These couplings are designed to handle all combinations of shock, vibration, and misalignment. They excel in various aspects:

- **Parallel:** Absorbing parallel misalignment without wear, minimizing energy loss, with handling capacities ranging from 0.015" to 0.062" depending on size.
- **Angular:** Easily accommodating angular misalignment up to 2 degrees without appreciable wear, thanks to flexing characteristics and tooth locking action.
- **Torsional:** Torsionally resilient sleeves absorb shocks and dampen vibrations effectively, preventing transmission between equipment.
- **S/B (end float):** With axial flexibility allowing limited end float acceptance, Quadra-Flex® couplings reduce thrust loads transferred to bearings.



MARTIN-FLEX® COUPLING

MARTIN FLEX® FLEXIBLE COUPLINGS are engineered to seamlessly transmit power while accommodating shaft misalignment up to 4°, parallel misalignment up to 0.125", and end float up to 0.313". Two-piece flange design for swift and effortless installation, these couplings utilize an elastomeric element to absorb shock and torsional vibration across a broad temperature range.



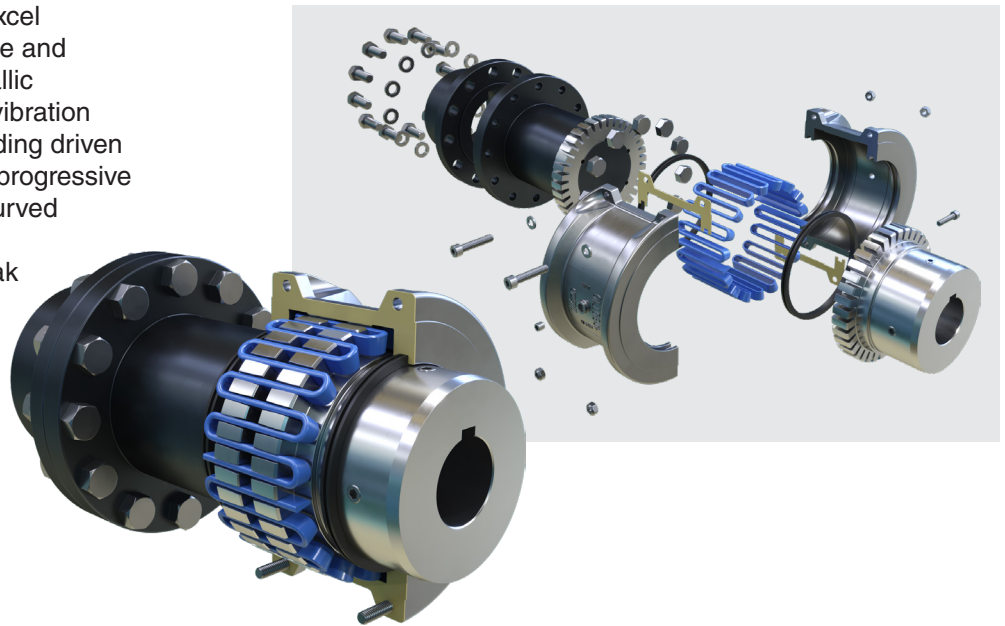
METALLIC COUPLINGS

Metallic couplings enable efficient torque transmission and compensate for misalignment. They are resilient to harsh environments and have high torque capacity and power transmission capability. With their compact design, durability, reduced maintenance needs, and misalignment compensation, metallic couplings are reliable for applications that require efficient power transmission in various industries like industrial machinery, mining, construction, as well as oil and gas.

- **HIGH TORQUE CAPACITY** for heavy-duty applications needing substantial power transmission.
- **MATERIAL OPTIONS** provide excellent resistance to heat, corrosion, and harsh environmental conditions for demanding applications.
- **STIFFNESS** ensures precise and efficient power transmission with minimal torsional deflection.
- **MISALIGNMENT ACCOMMODATION** for angular, parallel, and axial misalignments, leading to reduced strain on connected equipment.
- **COMPACT DESIGN** is ideal for limited space applications, minimizing size and weight.
- **LUBRICATION** requirements are generally low, reducing maintenance needs and increasing convenience.
- **HIGH POWER TRANSMISSION CAPABILITY** efficiently transmit large amounts of power, ensuring reliability in high-power applications.
- **LONGEVITY AND DURABLE DESIGNS** minimize downtime and maintenance costs in demanding industrial environments.

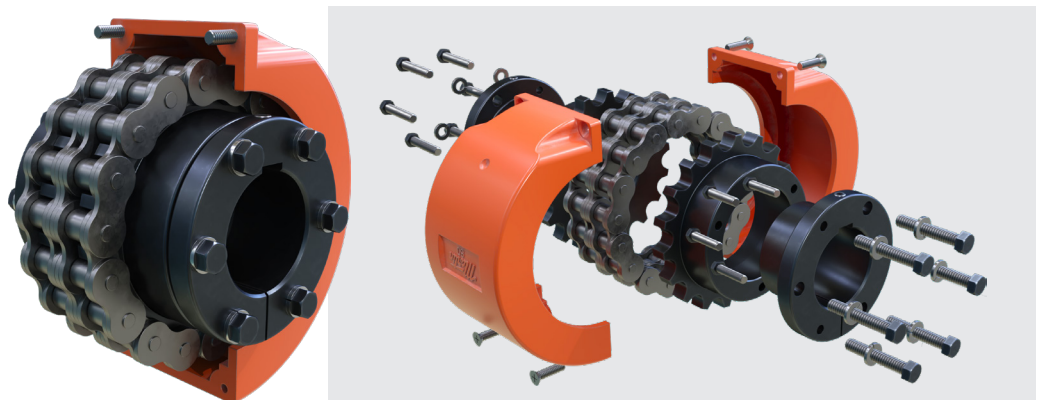
BLUE-FLEX® GRID COUPLING

Martin Blue-Flex® grid couplings excel in applications requiring high torque and dampening. Unlike traditional metallic couplings, they effectively reduce vibration and absorb shock loads, safeguarding driven and driving components. Through progressive contact between the hub teeth's curved profile and the flexible grid, impact energy is dispersed, mitigating peak loads. Blue-Flex® grid couplings adhere to Martin's renowned standards for quality, availability, service, and response time, ensuring reliability that industries depend on.



ROLLER CHAIN COUPLING

Roller chain couplings are commonly used in industrial machinery, particularly in applications where precise motion transmission is required, or where there may be misalignment between the shafts. They are known for their durability, reliability, and ability to handle high torque loads.



POWERING INDUSTRIES SINCE 1951

Unlock the pinnacle of industrial excellence with Martin, your trusted partner in custom coupling engineering. For over seven decades, we've been at the forefront of innovation, crafting bespoke solutions that stand the test of time.

Elevate your industrial experience with Martin – where precision meets performance, and innovation meets reliability. Unleash the power of custom couplings designed to propel your industry forward. Choose Martin, choose excellence.



UNMATCHED INVENTORY

With the largest power transmission stock in North America, find the perfect fit for your needs, always exceeding expectations.

TAILORED TO PERFECTION

Crafting made-to-order couplings for unique industrial needs. Diverse materials, shaft options, and assemblies bring your vision to life.

QUALITY ASSURED

Backed by a solid one-year warranty*, Martin ensures top-tier reliability and durability in every product.

RAPID RESPONSE, SWIFT SOLUTIONS

Quick alterations and manufacturing across locations guarantee the industry's fastest lead times for made-to-order products. Your deadlines, our priority.

A PERSONAL TOUCH TO EVERY ORDER

Beyond products, Martin is your dedicated partner in success. Experience precision, performance, and reliability. Choose Martin, choose excellence.

* Conditions apply, check our Limited Warranty at <https://martinsg.info/terms>

COUPLING SELECTION GUIDE

SELECTION CRITERION		COUPLING TYPE					
		ML - JAW	CHAIN	QUADRA-FLEX	MARTIN-FLEX	GO-FLEX	BLUE-FLEX
Shaft Size Range	inch	1/8" to 2-5/8"	7/16" to 6-1/8"	3/8" to 5-1/2"	3/8" to 3-1/2"	1/2" to 11"	1/2" to 13"
	mm	4 to 65	12 to 160	9 to 140	9 to 90	12 to 280	12 to 330
Torque Range	in-lbs	3.5 to 6,228	1,921 to 151,622**	60 to 72,480	649 to 9,076	365 to 1,680,000	460 to 1,650,000
	Nm	0.4 to 704	218 to 17,135	6.78 to 8,190	73 to 1025	40 to 189,840	52 to 186,450
Maximum Angular Misalignment		1/2° to 1°	2°	2°	4°	2°	.25°
Temperature Range		-40° to 212° F	-30° to 225° F	-65° to 275° F	-45° to 180° F	-60° to 212° F	-40° to 250° F
Standard Element		-40° to 100° C	-35° to 108° C	-53° to 135° C	-42° to 85° C	-50° to 100° C	-40° to 121° C
Reactionary Loads due to Misalignment		Medium	Low	Low	Medium	Low	High
Torque to Outside Diameter Capability		Good	Good	Fair	Fair	Fair	Good
Speed Capability		Good	Good	Fair	Fair	Good	Good
Torsional Stiffness		Low	Medium	Low	Low	Medium	Medium
Ease of Installation/Maintenance		Excellent	Excellent	Excellent	Excellent	Excellent	Fair
Chemical Resistance		Good	Good	Good	Fair	Good	Fair
Adaptable to Several Designs		Excellent	Poor	Excellent	Good	Excellent	Excellent
Damping Capacity		Good	Poor	Excellent	Excellent	Good	Good
Industry Interchangeable		Yes	Yes	Yes	Yes	Yes	Yes

** MAX Allowable Torque below 50 RPM

*** Half-Coupling ONLY

INSERT SELECTION GUIDE

GO-FLEX® INSERT

SELECTION CRITERION	STANDARD Red	MEDIUM TORQUE Dark Blue	EXTREME HIGH TORQUE Black	METAL DETECTABLE Blue	HI-TEMP White
Temperature Range	°F -60°F to 212°F °C -50°C to 100°C				Up to 300°F Up to 148°C
Material	Moderately soft urethane	Higher durometer urethane	Highest torque urethane	Urethane with FDA compliant additive for metal detectability	Hi-Temp urethane
Applications	Good vibration dampening, cushioning of shock loads, reversing or quick start and stop of high inertial loads	Moderate to high torque	High torque	Food and chemical Industries where plastic contamination compromises production	Moderate to high torque

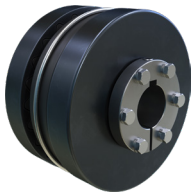
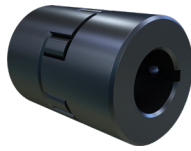
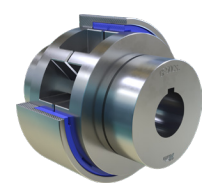
JAW COUPLING SPIDER

SELECTION CRITERION		BUNA-N Black	URETHANE Blue	HYTREL® Tan	BRONZE
Temperature Range	°F	-40° to 212° F	-30° to 160° F	-60° to 250° F	-40° to 450° F
	°C	-40° to 100° C	-34° to 71° C	-51° to 121° C	-40° to 232° C
Missalignment	Angular	1°		1/2°	
	Parallel	0.015"			
Dampening		High	Low		N/A
Resistances		Good resistance to oil	Good resistance to oil and chemicals	Excellent resistance to oil and chemicals	Not affected by extreme temperatures, water, oil, or dirt
Other Features		<ul style="list-style-type: none">Standard flexible elastomerResembles natural rubber	<ul style="list-style-type: none">Greater torque capability than NBR (1.5 times)Not recommended for cyclic or start/stop	<ul style="list-style-type: none">Flexible elastomer designed for high torque and high temperature operationsNot recommended for cyclic or start/stop	<ul style="list-style-type: none">Rigid, porous oil-impregnated metal insertFor slow speed (max. 250 RPM), requiring high torque capabilities

QUADRA-FLEX® SLEEVE

SELECTION CRITERION	TPR	EPDM	NEOPRENE	HYTREL®
Sizes	3 - 12	13 - 16	11 - 16	6 - 14
Temperature Range	°F -50° F to +275° F °C -46° C to +135° C	°F -30° F to +275° F °C -34° C to +135° C	°F 0° F to +200° F °C -18° C to +93° C	°F -65° F to +250° F °C -54° C to +121° C
Torsional Flexibility	15°			7°
Resistances	Good resistance to oil	Good resistance to oil and chemicals	Excellent resistance to oil and chemicals	Not affected by extreme temperatures, water, oil, or dirt
Other Features	Standard material for sizes 3-12. Combines the characteristics of both EPDM and Neoprene	Standard material for sizes 13-16	These sleeves offer a higher resistance than EPDM and are self-extinguishing	For high torque applications Four times higher power

NOMENCLATURE

Quadra-Flex®
CouplingsJaw
CouplingsMartin-Flex®
CouplingsChain
CouplingsBlue-Flex® Grid
CouplingsGo-Flex® Flexible
Couplings

QUADRA-FLEX®

FLANGE

Flange Size

3 to 16

Flange

J Sintered Steel, BTS

S Cast Iron, BTS

B Cast Iron, QD Bushing

SC Spacer Coupling Flange

Hubs (for SC Flanges)

H Spacer Coupling Hub

HS Spacer Coupling Hub Short

Bore

Note: Bored-to-Size flanges are furnished with standard keyway and 2 setscrews unless specified otherwise

SLEEVE

SLEEVE 8JEM-MD

Add if

Metal
Detectable

Sleeve Material

JEM TPR - 1 Pc Solid, Thermoplastic

JEMS TPR - 1 Pc Split, Thermoplastic

EM TPR - 2 Pc, Retaining Ring

E EPDM - 2 Pc, Retaining Ring

N Neoprene - 2 Pc, Retaining Ring

H Hytrel - 1 Pc Solid

HS Hytrel - 2 Pc Split

Sleeve Size

3 to 16

JAW

COUPLING HALF

Type

ML Universal

MS Super

Size

035 to 276

Material leave blank for steel

SS Stainless Steel

Bore

SPIDER

SPIDER SRL090-MD

Add if Metal
Detectable

Size

035 to 276

Spider

SRL Buna-N SUL Urethane

SHL Hytrel SBL Bronze

MARTIN FLEX®

Component

F Flange E Element

Size

5 to 12

F5JA

Bore

JA, SH, SDS, SK, SF, E
(small to large)

ROLLER CHAIN

Chain Size

40 to 120

Tooth Count

Bore Size or Bushing

TBH, TBF Taper

JA, SH, SK, SF QD

(small to large)

4016 7/8

Add COV for Cover

4012 to 6020 Plastic (No Suffix)

Aluminium (Add -AL)

6022 to 12022 Aluminium (No Suffix)

Add CHN for Chain

BLUE-FLEX® GRID

COMPLETE COUPLING ASSEMBLY

1020T107/8 x 1

Size

1020
to 1200

Blue-Flex®

Cover Style

10 Horizontal

20 Vertical

Bore Sizes

GRID & HUB

1040T-GRID Grid

1050T-HUB1 7/8

Hub Type

HUB Hub

SH Shaft Hub

Bore Size (Plain Bore if no Bore Size)

1020T to 1090T Clearance fit bore

standard keyway and 2 set screws

1100T to 1200T Interference fit bore

standard keyway and 1 setscrew

PARTS & KITS

1090T10-SUBASY

Cover Style

10 Horizontal

20 Vertical

Parts & Kits

COV Cover, Fastener Set & Seal Kit

FAS Fastener Set

SUBASY Cover Kit & Grid

SEAL Seal Kit

SPACER HUB

1050T-CL3.5000

Part

CL Spacer Hub

Spacer Length

GO-FLEX®

HUB

Go-Flex®

GF20CS 1

Size

10 to 120

Material

CS Carbon Steel

SS Stainless Steel

Bore Size (Add -PHB for Plain Bore Hub)

GF10 to GF50 Clearance fit bore

standard keyway and 2 set screws

GF60 to GF120 Interference fit bore

standard keyway and 1 setscrew

INSERT

Go-Flex®

GF20SD-INS

Size

10 to 120

Insert Type

SD Standard Duty (Red)

MD Medium Duty (Dark Blue)

XD Extreme Duty (Black)

HT Hi-Temp (White)

FG Metal Detectable (Light Blue)

Insert

COVER

Go-Flex®

GF20XP-CVR

Size

10 to 120

Cover Type

SD Standard Duty (Carbon Steel)

SS Standard Duty (Stainless Steel)

XP Horizontal Split (Aluminium)

VS Vertical Split

HS Horizontal/Vertical Split

Cover



Phone: 817.258.3000

Fax: 817.258.3333

martinsprocket.com