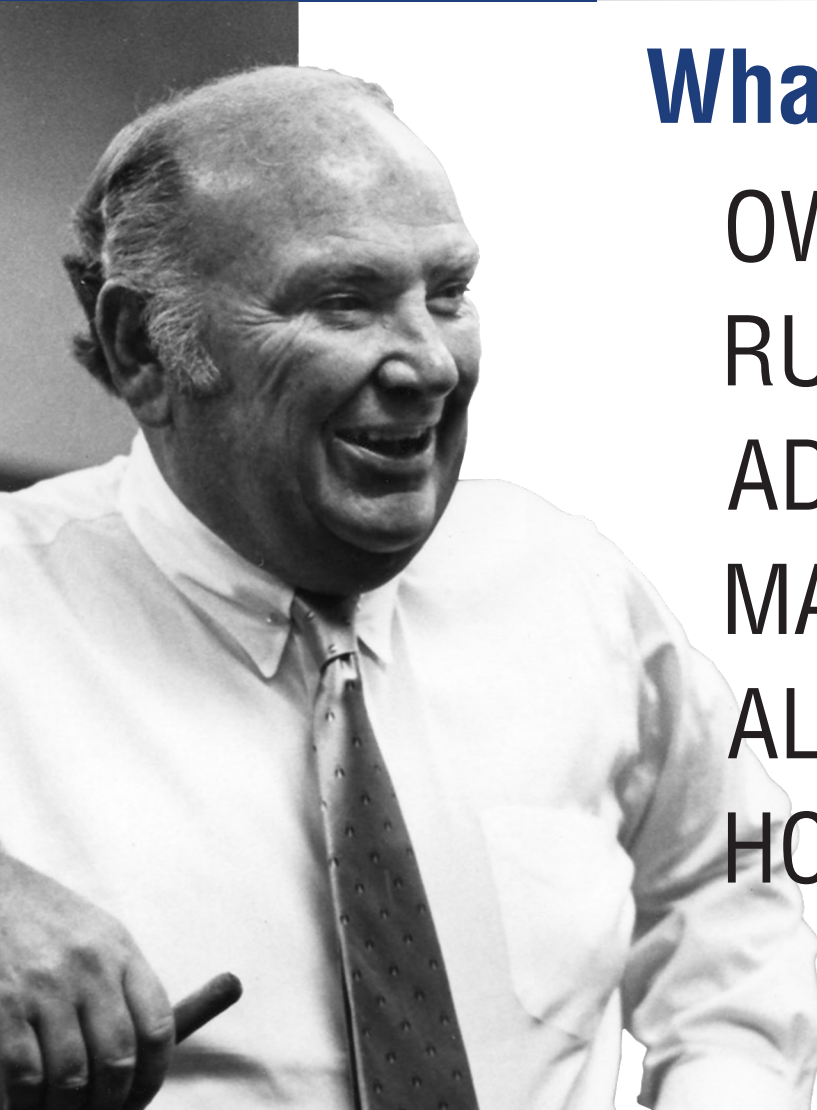




Martin

Synchronous Sprockets

MPC[®], HTS[®], HIGH HP HTS[®]
AND TIMING PULLEYS



What would Joe do?

OWN your own territory and
take care of our customers

RUN your facility and take
care of our people

ADD something to
the ballgame

MAKE SURE you have your
priorities right

ALWAYS back to the basics – quality,
service, low-cost producer

HOW to get big and
stay small

A handwritten signature in blue ink that reads "Joe Martin". The signature is stylized and cursive.

Established in 1951 in Arlington, Texas, Martin has evolved into a global powerhouse with 30+ strategically located sites. Our unwavering commitment to excellence in power transmission and material handling positions us as a trusted partner globally. At Martin, we offer more than products; we provide precision, personalized service, combining global capability with local care. Experience the Martin difference, where our dedication to quality sets us apart.

Success in Business, Martin's Philosophy:

Success at Martin requires a strategic mindset — knowing customers, taking ownership, building trust, and cultivating an owner's mentality. Effective leadership involves personal responsibility, positive work culture, visibility, and effective communication. Unlocking success demands creativity, innovation, and resisting the status quo. Aligning priorities with a greater purpose ensures contributions lead to organizational success. Martin emphasizes basics — quality, service, and low-cost production — for streamlined and maximized efforts.

"Get Big, Stay Small" Strategy:

Martin advises strategic business expansion, discovering scalable avenues while preserving core qualities. Maintaining agility and adaptability in the dynamic market landscape is crucial. In a world full of choices, Martin's commitment to prioritizing personalized service and connections with customers sets us apart from the competition.

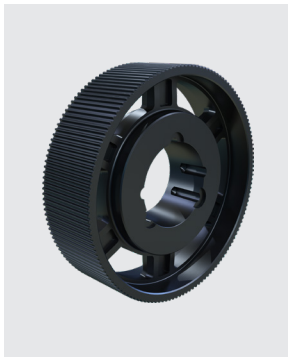
AVAILABLE IN STOCK

**MPC®**

- compatible with most modified curvilinear belts
- 8mm and 14mm pitches
- QD, TB and minimum plain bore styles
- Air-Cooled heat exchanger
- 22 teeth up to 224 teeth

BELT WIDTHS

- 8mm pitch: 12, 21, 36, 62
- 14mm pitch: 20, 37, 68, 90, 125

**HTS® – HIGH TORQUE**

- RPP tooth profile, runs with Hawk Pd®, RPP®, RPP+® HTD belts
- 5mm, 8mm, 14mm and 20mm pitches
- QD, TB, and minimum plain bore styles
- 20 teeth up to 216 teeth

BELT WIDTHS

- 5mm pitch: 15, 25
- 8mm pitch: 20, 30, 50, 85
- 14mm pitch: 40, 55, 85, 115, 170
- 20mm pitch: 115, 170, 230, 290, 340

**HIGH HP HTS® – HIGH HORSEPOWER**

- RPP tooth profile, runs with: Hawk Pd®, Panther®, QT Power Chain® belts
- 8mm, 14mm pitches
- QD, TB, and minimum plain bore styles
- 22 teeth up to 216 teeth

BELT WIDTHS

- Belt widths 8mm pitch: 12, 22, 35, 60
- Belt widths 14mm pitch: 20, 42, 65, 90, 120

**TIMING PULLEY**

- Compatible with trapezoidal tooth belts
- XL, L, H, XH pitches
- QD, TB, and minimum plain bore styles
- 10 teeth up to 120 teeth

MADE-TO-ORDER

**SPECIALITY**

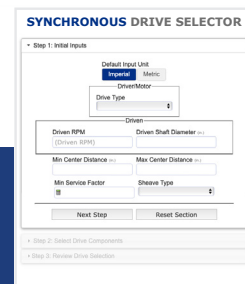
- Special bores
- Custom labeling and kitting
- Staged for scheduled releases from local Martin Plant
- Cast iron and ductile iron poured in Martin's Foundry
- And more...

MATERIALS

- Cast Iron
- Ductile Iron
- Carbon steel
- Stainless steel
- Sintered metal
- Aluminum
- Plastic

FINISHES

- Nickel
- Zinc
- Cadmium
- Chrome

**ONLINE SYNCHRONOUS DRIVE SELECTOR TOOL**

The Martin Synchronous Drive Selector online tool simplifies the process of finding the right product for you. Simply input your drive specifications, and we'll guide you to the perfect selection. Visit martinsprocket.com or scan the QR code to explore this and other drive selector tools available.



MARTIN FOUNDRY

Operating its own foundry enables Martin to provide its customers with quality assurance, quick lead times, and application engineering assistance on cast and ductile iron parts.

With an upper range of 96" in diameter and 10,000 pounds, our own pattern shop, and streamlined access to secondary machining, Martins's comprehensive capabilities serve a broad spectrum of industrial uses.

Scan QR code to watch video:
Forge & Foundry



SINTERED METAL

Martin's sintered metal plant, located in Paragould, AR, uses a multitude of sintered steel presses to manufacture stock parts in high volumes. Their presses range from 60 Tons to 2000 Tons and average around 750 Tons. Our in house engineering and drafting department allow for flexibility in design and the freedom to create our own tooling for custom parts.

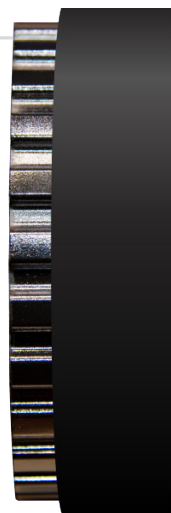
Scan QR code to watch video:
Sintered Metal



FLANGES

Flanges on synchronous sprockets run parallel to the belt. These flanges act as additional tracking devices, preventing the belt from shifting laterally or moving off course. They provide physical barriers that guide the belt along the intended path, minimizing the risk of belt misalignment.

**WITHOUT
FLANGES**



**WITH
FLANGES**

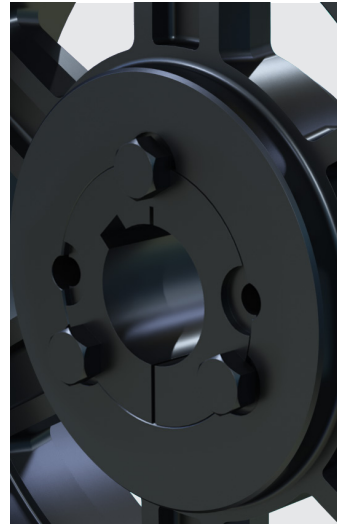


BUSHINGS



QUICK DETACHABLE (QD)

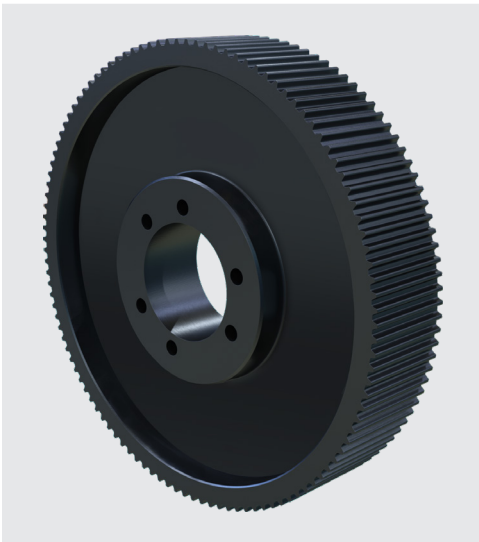
- Offers faster replacement.
- Single split through both the barrel and flange.
- No damage to shaft upon removal.
- Compatible with both conventional and reverse mounting.



TAPER BUSHINGS (TB)

- Flush-mount for smaller equipment footprint.
- Single split through the barrel while the screws are used to tighten it to the shaft.
- There is no damage to the shaft upon removal.

CONSTRUCTION



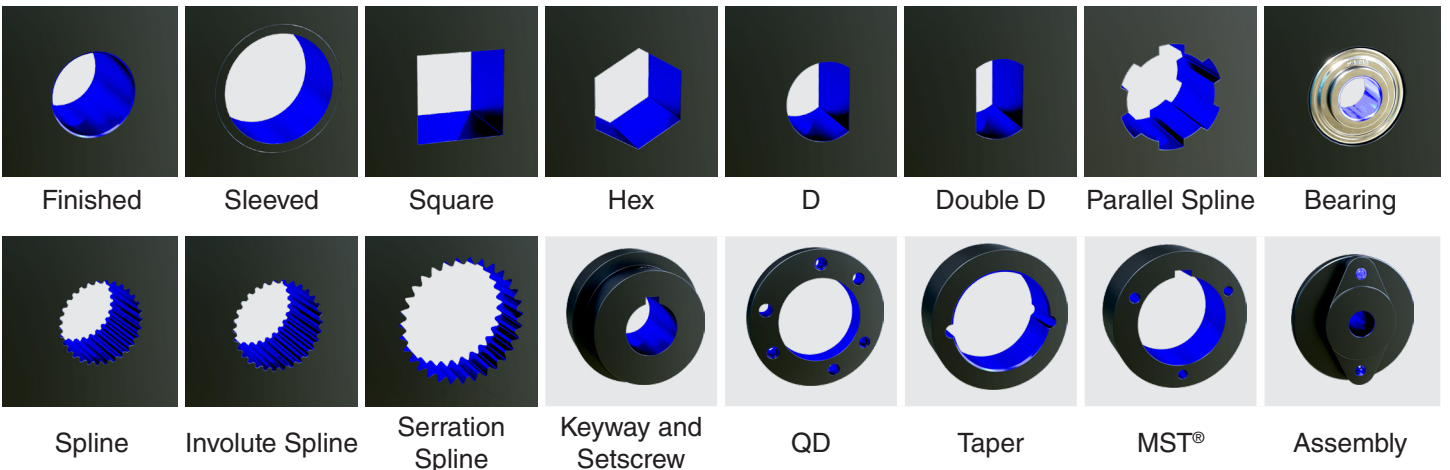
BEFORE

In this example constructing the synchronous sprocket with a spoked pattern resulted in a 48% decrease in the overall weight of the completed part.



AFTER

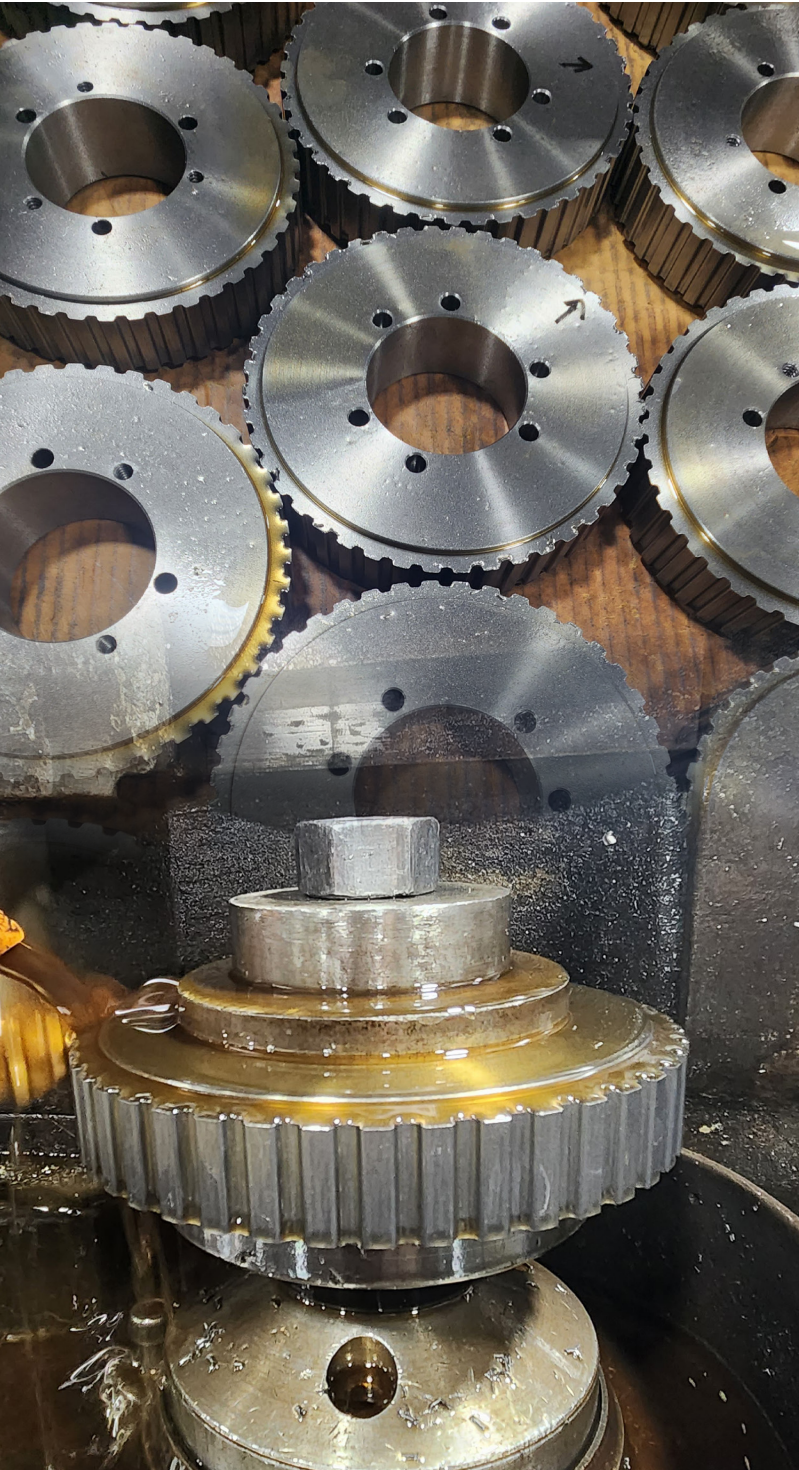
AVAILABLE CUSTOM BORE OPTIONS



POWERING INDUSTRIES SINCE 1951

Unlock the pinnacle of industrial excellence with Martin, your trusted partner in custom synchronous drive engineering. For over seven decades, we've been at the forefront of innovation, crafting bespoke solutions that stand the test of time.

Elevate your industrial experience with Martin – where precision meets performance, and innovation meets reliability. Unleash the power of custom synchronous sprockets designed to propel your industry forward. Choose Martin, choose excellence.



UNMATCHED INVENTORY

With the largest power transmission stock in North America, find the perfect fit for your needs, always exceeding expectations.

TAILORED TO PERFECTION

Crafting made-to-order synchronous sprockets for unique industrial needs. Diverse materials, shaft options, and assemblies bring your vision to life.

QUALITY ASSURED

Backed by a solid one-year warranty*, Martin ensures top-tier reliability and durability in every product.

RAPID RESPONSE, SWIFT SOLUTIONS

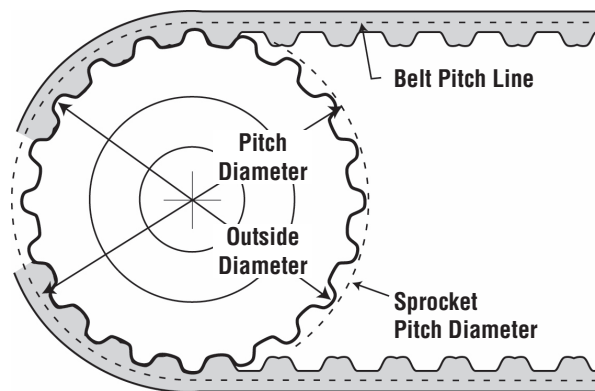
Quick alterations and manufacturing across locations guarantee the industry's fastest lead times for made-to-order products. Your deadlines, our priority.

A PERSONAL TOUCH TO EVERY ORDER

Beyond products, Martin is your dedicated partner in success. Experience precision, performance, and reliability. Choose Martin, choose excellence.

* Conditions apply, check our Limited Warranty at <https://martinsg.info/terms>

NOMENCLATURE



MPC®

Tooth profile compatible with most popular modified curvilinear belts

Bushing Options

PB Minimum Plain Bore
No prefix Taper Bushed or QD

PB 8MX 22S 12 - SH

Bushing Option

QD JA, SH, SDS... S
TB 1008, 1108... 120100

Belt Pitch

8mm
14mm

Belt Width (mm)

12, 21, 36, 62
20, 37, 68, 90, 125

Number of Teeth

S identifies it as an MPC

HTS®

RPP tooth profile, runs with:
Hawk Pd®, RPP®, RPP+® HTD belts

P 30 14M 55 - SK

HTS®

Number of Teeth

Bushing or MPB

Belt Pitch

5mm 15, 25
8mm 20, 30, 50, 85
14mm 40, 55, 85, 115, 170
20mm 115, 170, 230, 290, 340

Belt Width (mm)

HIGH HP HTS®

RPP tooth profile, runs with:
Hawk Pd®, Panther®, QT Power Chain® belts

W 24 8M 22 - JA

High HP HTS®

Number of Teeth

Bushing or MPB

Belt Pitch

8mm 12, 22, 35, 60
14mm 20, 42, 65, 90, 120

Belt Width (mm)

TIMING PULLEYS

Tooth profile compatible with trapezoidal tooth belts

TB Bushing

If listed, denotes that pulley is bored
and drilled to accept TB bushing.

TB 18 L 100 JA

Bushing Option

QD JA, SH, SDS... S
TB 1008, 1108... 120100

Number of Teeth

Belt Pitch

XL Extra Light 1/5" **H** Heavy 1/2"
L Light 3/8" **XH** Extra Heavy 7/8"

Belt Width

037 3/8" **150** 1 1/2"
050 1/2" **200** 2"
075 3/4" **300** 3"
100 1" **400** 4"



Phone: 817.258.3000

Fax: 817.258.3333

martinsprocket.com