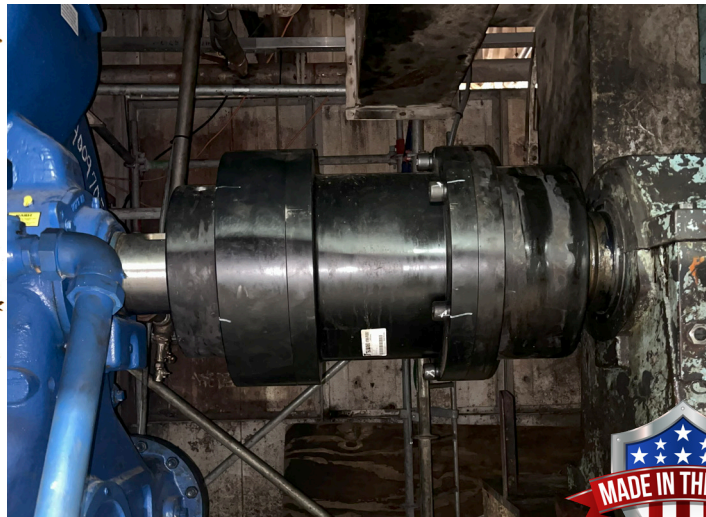


# UPGRADE VACUUM PUMP RELIABILITY WITH ATRA-FLEX®

Reduce Downtime, Eliminate Lubrication, and Simplify Maintenance



## REAL-WORLD SUCCESS:

**System Specs:** 2250 HP @ 300 RPM | Torque: 472,687 in-lbs  
**Previous Coupling:** Competitor 200F Grid Coupling

### Replaced With:

- Motor to Pump: (1) Atra-Flex T10 OnyxShield™ LEF Spacer Coupling with Orange Insert
- Pump to Pump: (2) Atra-Flex T10 OnyxShield™ Spacer Coupling with Orange Insert

## WHY SWITCH TO ATRA-FLEX?

Grid Coupling Challenges	Atra-Flex Advantages
Obsolete 200F grid coupling	Industry leading lead times and stock
Required lubrication	No lubrication
Complex failure repairs	No moving equipment or hubs when changing insert
Lengthy PMs and inspections	Quick visual checks with minimal downtime
Risk of unexpected failure	Elastomeric design handles shock and misalignment

T-Series vs. Grid Comparison Video



## KEY FEATURES

- **Rapid Insert Replacement**  
Reduce downtime from hours to minutes.
- **Built for Harsh Conditions**  
OnyxShield™ process for corrosion & wear resistance.
- **Low Maintenance**  
No grease, no mess, no scheduled relubrication.
- **Drop-In Upgrade**  
Custom spacer lengths and bores available.

# COMMON INDUSTRIES & APPLICATIONS FOR VACUUM PUMPS



**Chemical**



**Petrochemical**



**Geothermal Power Plants**



**Wastewater Treatment**



**Food & Beverage**



**Sugar Production**



**Mining**



**Plastic Extrusion**



**Pulp & Paper**



**Carpet Manufacturing**

## READY TO SWITCH?

Visit [www.ustsubaki.com/products/atra-flex/](http://www.ustsubaki.com/products/atra-flex/) to learn more or request a quote.