



# CHAIN WEAR INDICATOR

Measure Chain Wear In No Time



[ustsubaki.com](http://ustsubaki.com)

# INSTANT AND EASY DEVICE

To Measure Chain Wear in Seconds

## TSUBAKI CHAIN WEAR INDICATOR

The interpretation of what chain wear elongation (“stretch”) is and how it can be accurately measured is a common issue when determining chain wear. Some customers utilize tape measures to determine chain stretch, while others use their own internal best practices and estimates to determine if the life of the chain has exhausted.

Tsubaki Chain Wear Indicators are designed to measure roller chain condition and determine critical wear. The indicator tools are made of high-quality material to withstand harsh and corrosive environments. The strong construction of the indicator tools ensures accurate measurements of the chains every time.



Inside of Wear Indicator Kit

### RECOMMENDATIONS FOR USE

- 01** Use the chain wear indicators according to regular plant maintenance schedules
- 02** Always measure the chain at several key areas; chain typically does not wear evenly, and measuring in multiple areas will provide the most accurate measurements
- 03** Replacing the chain before reaching 1.5%-2% elongation will prevent significant sprocket wear, thus preventing costly downtime



Individual Tool Leather Pouch

### WEAR INDICATOR KITS

#### ANSI STANDARD

- Tsubaki Part No. **ANSICHAINWEARINDIC**
- 5 Indicator Tools for ANSI Sizes 35-80
- ANSI & BS Chain Identifiers
- How-to-Use Instruction

#### BRITISH STANDARD (BS)

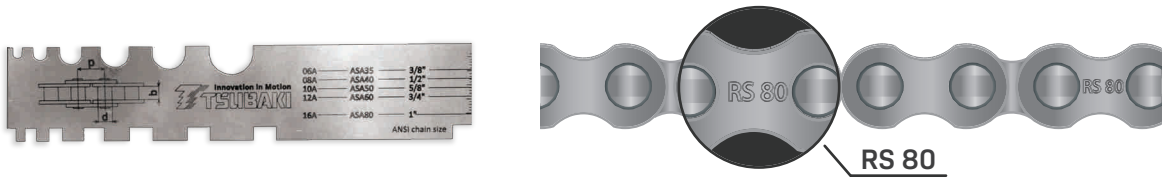
- Tsubaki Part No. **BSCHAINWEARINDICA**
- 5 Indicator Tools for BS Sizes 06B-16B
- ANSI & BS Chain Identifiers
- How-to-Use Instruction

### INDIVIDUAL WEAR INDICATOR TOOL

- Individual Indicator Tools Available for Other Larger Sizes:
  - ANSI Sizes from 100 to 240
  - BS Sizes from 20B to 56B
- Individually Packaged in Leather Pouch

# 01

Use the chain identifier tool to identify whether the chain is ANSI or British Standard chain as well as a specific chain size based on the roller diameter and inside width of roller link. Or simply locate the stamp on a side plate of chain to determine the size.



# 02

Find the chain wear indicator tool in a kit that indicates the same chain size as the chain.



# 03

Pull the chain taut. Then place the mounting head of the tool on any roller of the chain and rest the indicator tip lightly along the taut chain.

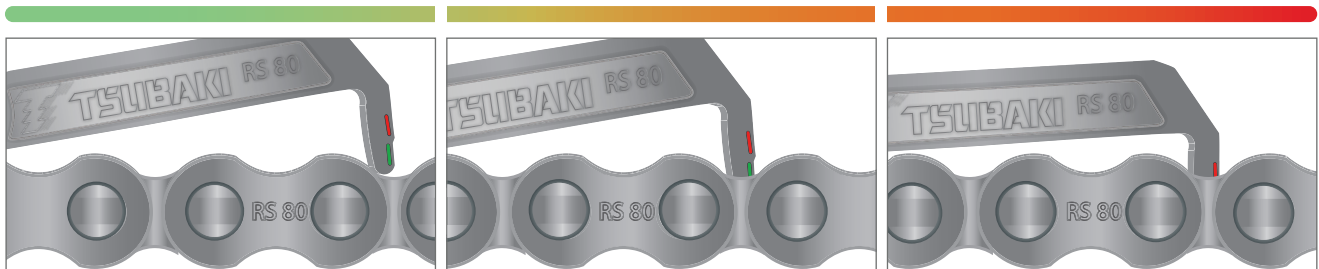


# 04

The indicator tip will rest between links and show red or green depending on the degree of elongation. If it drops and still shows green, then there's no measurable elongation. If it drops and does not show any green, then the chain needs to be replaced.

NEW

WORN



**0% ELONGATION**  
No wear indicated

**0.7% ELONGATION**  
Start planning for chain replacement

**1.5% ELONGATION**  
Strongly recommend replacing chain ASAP;  
Sprocket wear starts

# MORE INNOVATIVE SOLUTIONS FROM TSUBAKI®



**SEALED JOINT CHAIN OPTIONS**



**BACKSTOPS & OVERRUNNING CLUTCHES**



**STEEL CABLE CARRIERS**



**CONTINUOUS-FLEX CABLES**



**SMART TOOTH® SPROCKETS**



**TITAN® SERIES CHAINS**



**ATRA-FLEX® COUPLINGS**

## EXCELLENCE THROUGH INNOVATION SINCE 1917

For over 100 years, Tsubaki has developed and manufactured the highest-quality products for power transmission and motion control. With a vast network of global production facilities, R&D resources and sales offices, Tsubaki remains committed to providing innovative solutions to customers' problems for the next 100 years.

[ustsubaki.com](http://ustsubaki.com)



**Corporate Headquarters**  
**U.S. Tsubaki Power Transmission, LLC**  
 301 E. Marquardt Drive  
 Wheeling, IL 60090  
 Tel: (847) 459-9500  
[www.ustsubaki.com](http://www.ustsubaki.com)



**Roller Chain Division**  
 821 Main Street  
 Holyoke, MA 01040  
 Tel: (847) 459-9500



**Conveyor & Construction Chain Division**  
 1010 Edgewater Drive  
 Sandusky, OH 44870  
 Tel: (419) 626-4560



**Sprocket Manufacturing**  
 1630 Drew Road  
 Mississauga, Ontario  
 L5S 1J6  
 Tel: (847) 459-9500



**Cable & Hose Carrier Division**  
 7100 W. Marcia Road  
 Milwaukee, WI 53223  
 Tel: (414) 354-1994



**Coupling Manufacturing**  
 110 E. Garry Avenue  
 Santa Ana, CA 92707  
 Tel: (714) 432-8411



Note: In accordance with the policy of U.S. Tsubaki Power Transmission, LLC to consistently improve its products, the specifications in this brochure are subject to change without notice. The logos, brand names or product names in this brochure are trademarks or registered trademarks of Tsubakimoto Chain Co. and its subsidiaries in Japan, the U.S. and other countries.